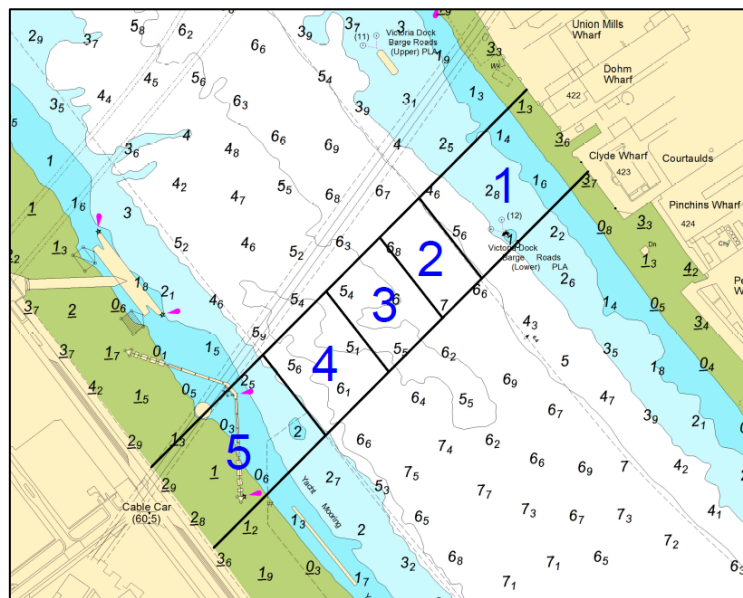


## NOTICE TO MARINERS M16 of 2018

### BUGSBYS REACH SILVERTOWN TUNNEL BORE HOLE OPERATIONS

On or about **Saturday 24<sup>th</sup> February 2018** contractors working on behalf of Transport for London will be conducting bore hole drilling works in Bugsbys Reach in the vicinity of the Emirates Air Line cable car. These works are expected to take approximately nine weeks.

Works will consist of 27 individually drilled bore holes across the area marked on the accompanying chartlet. In order to accommodate these operations river traffic will be managed by London VTS. The location of the operation (in relation to the marked areas on the chartlet and table) will be detailed as part of the routine river broadcast. An exclusion zone will be established extending 50m around the works.



Area	Channel Location	Vicinity
1	Outside the navigable channel	North
2	Inside the navigable channel	North
3	Inside the navigable channel	Central
4	Inside the navigable channel	South
5	Outside the navigable channel	South

All vessels are to navigate in this area with caution, maintaining a continuous watch on VHF Channel 14 and follow the instructions from London VTS. These works are within the Thames Barrier Control Zone and all masters are to ensure that they navigate accordingly.

The works will be conducted using a variety of craft including barges, tugs and multcats who by the nature of the works will be restricted in their ability to manoeuvre. Vessels are to be mindful of their wash when passing.

Further details will be broadcast by **London VTS** on **VHF Channel 14**.

---

**15 February 2018**

Port of London Authority  
London River House, Royal Pier Road,  
Gravesend, Kent DA12 2BG

**BOB BAKER**  
**CHIEF HARBOUR MASTER**



**EXPIRY DATE: 30<sup>th</sup> April 2018**  
TO RECEIVE FUTURE NOTICES TO MARINERS BY **E-MAIL**,  
PLEASE REGISTER VIA OUR WEBSITE [www.pla.co.uk](http://www.pla.co.uk)  
**Telephone calls, VHF radio traffic, CCTV and radar traffic images may  
be recorded in the VTS Centres at Gravesend and Woolwich**

