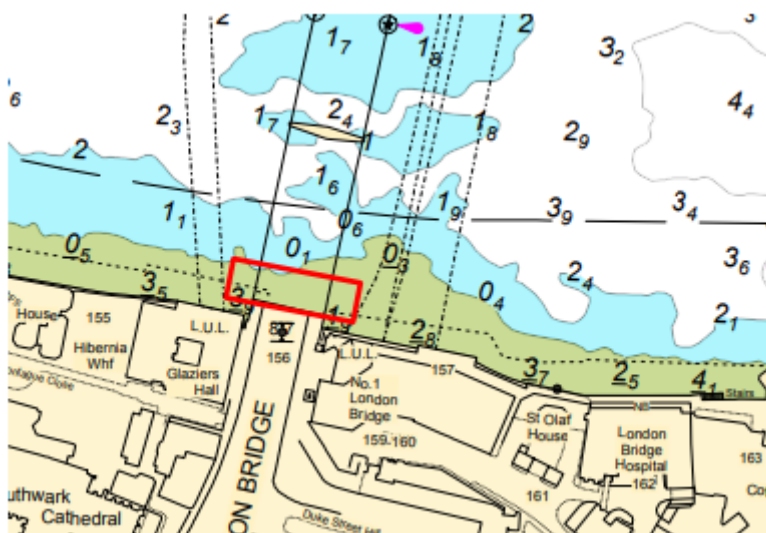


NOTICE TO MARINERS M15 of 2020

KING'S REACH LONDON BRIDGE MAINTENANCE SCAFFOLDING – NUMBER 3 ARCH

Contractors working on behalf of the City of London will be conducting maintenance works in arch number 3 of London Bridge. In order to accommodate these works a scaffold will be suspended under the arch extending a maximum of 6 metres from the southern embankment wall.



Erection of the scaffolding will commence on or about Thursday 4th June 2020, after which it will remain in place until approximately 3rd July 2020.

The scaffolding will be marked by tiger board during daylight hours and will be marked with 2 fixed vertical red lights at the upriver and downriver extremities of the structure during the hours of darkness.

Safety boat “**PRONTO**” will be on station throughout erection and dismantling operations and will maintain a listening watch on VHF Channel 14.

Further information will be broadcast by London VTS on VHF Channel 14.

26 May 2020

Port of London Authority
London River House, Royal Pier Road,
Gravesend, Kent DA12 2BG

**Mark Towns - Harbour
Master (Upper)**



EXPIRY DATE: 30th July 2020
TO RECEIVE FUTURE NOTICES TO MARINERS BY **E-MAIL**,
PLEASE REGISTER VIA OUR WEBSITE www.pla.co.uk
Telephone calls, VHF radio traffic, CCTV and radar traffic images may
be recorded in the VTS Centres at Gravesend and Woolwich
All Current Notices to Mariners can be found here -
<http://www.pla.co.uk/Safety/Regulations-and-Guidance/Notices-to-Mariners/Notices-to-Mariners>

