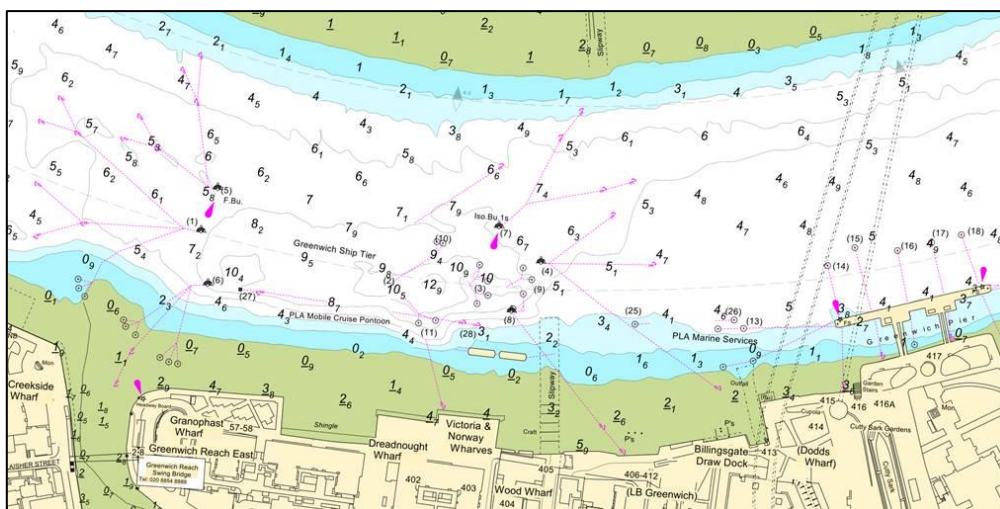


## NOTICE TO MARINERS M15 of 2019

### GREENWICH REACH GREENWICH SHIP TIER ISOPHASE LIGHT TRIAL

On or about 12<sup>th</sup> March 2019, for a period of approximately two weeks, the light characteristic of the outer lower wing buoy of Greenwich Ship Tier will be changed from the current Fixed Blue light to Isophase Blue 1s. This change is indicated in the chartlet below.



This trial is being undertaken to assess whether an alternative light characteristic will improve visibility of the Greenwich Ship Tier mooring buoys as well as other mooring buoy locations.

Reports from vessel masters and operators on the effectiveness of the alternative light characteristic should be made to the Upper District Harbour Master ([hmu@pla.co.uk](mailto:hmu@pla.co.uk)).

Further details will be broadcast by London VTS on VHF Channel 14.

**4 March 2019**

Port of London Authority  
London River House, Royal Pier Road,  
Gravesend, Kent DA12 2BG

**BOB BAKER**  
CHIEF HARBOUR MASTER



EXPIRY DATE: 31<sup>st</sup> March 2019  
TO RECEIVE FUTURE NOTICES TO MARINERS BY **E-MAIL**,  
PLEASE REGISTER VIA OUR WEBSITE [www.pla.co.uk](http://www.pla.co.uk)  
Telephone calls, VHF radio traffic, CCTV and radar traffic images may  
be recorded in the VTS Centres at Gravesend and Woolwich  
All Current Notices to Mariners can be found here -  
<http://www.pla.co.uk/Safety/Regulations-and-Guidance/Notices-to-Mariners/Notices-to-Mariners>

