

## NOTICE TO MARINERS M14 of 2019

### WOOLWICH REACH (UPPER)

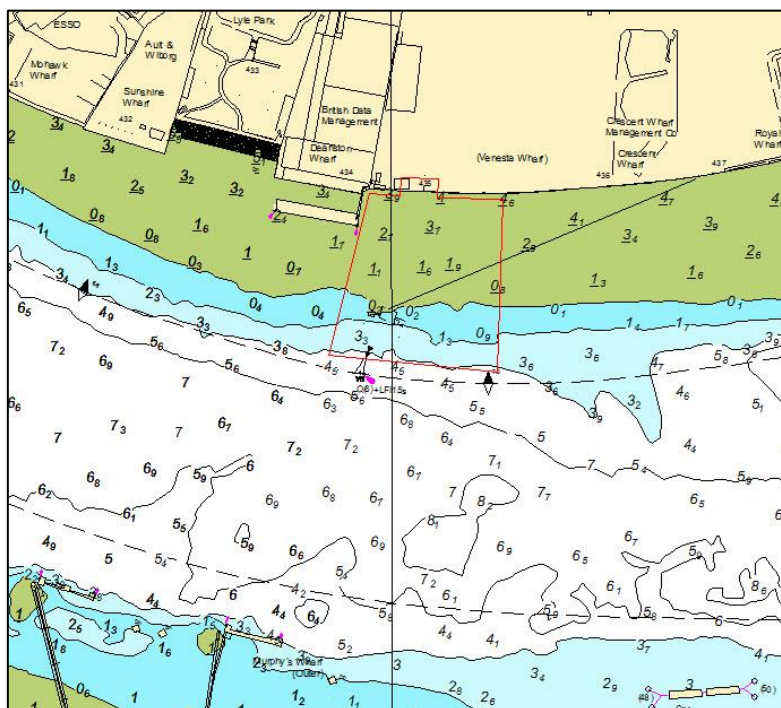
### ISLAND JETTY

## REPOSITIONED CARDINAL MARK

This Notice supersedes M90 of 2018

On or about Tuesday 5<sup>th</sup> March 2019 a PLA vessel will reposition the South Cardinal Mark at the former Island Jetty to mark the extremity of the work site of the new Royal Wharf Pier. On completion of the installation of piles, the South Cardinal Mark will remain in position until the arrival of the new pontoon.

The South Cardinal Mark will display a white light with characteristics Q(6)+LFl.15s. See the chartlet below depicting the new location of the South Cardinal Mark.



Further details will be broadcast by London VTS on VHF Channel 14.

**27 February 2019**

Port of London Authority  
London River House, Royal Pier Road,  
Gravesend, Kent DA12 2BG

**BOB BAKER**  
CHIEF HARBOUR MASTER



EXPIRY DATE: 3<sup>rd</sup> May 2019  
TO RECEIVE FUTURE NOTICES TO MARINERS BY **E-MAIL**,  
PLEASE REGISTER VIA OUR WEBSITE [www.pla.co.uk](http://www.pla.co.uk)  
Telephone calls, VHF radio traffic, CCTV and radar traffic images may  
be recorded in the VTS Centres at Gravesend and Woolwich  
All Current Notices to Mariners can be found here -  
<http://www.pla.co.uk/Safety/Regulations-and-Guidance/Notices-to-Mariners/Notices-to-Mariners>

