

NOTICE TO MARINERS

M13 of 2017

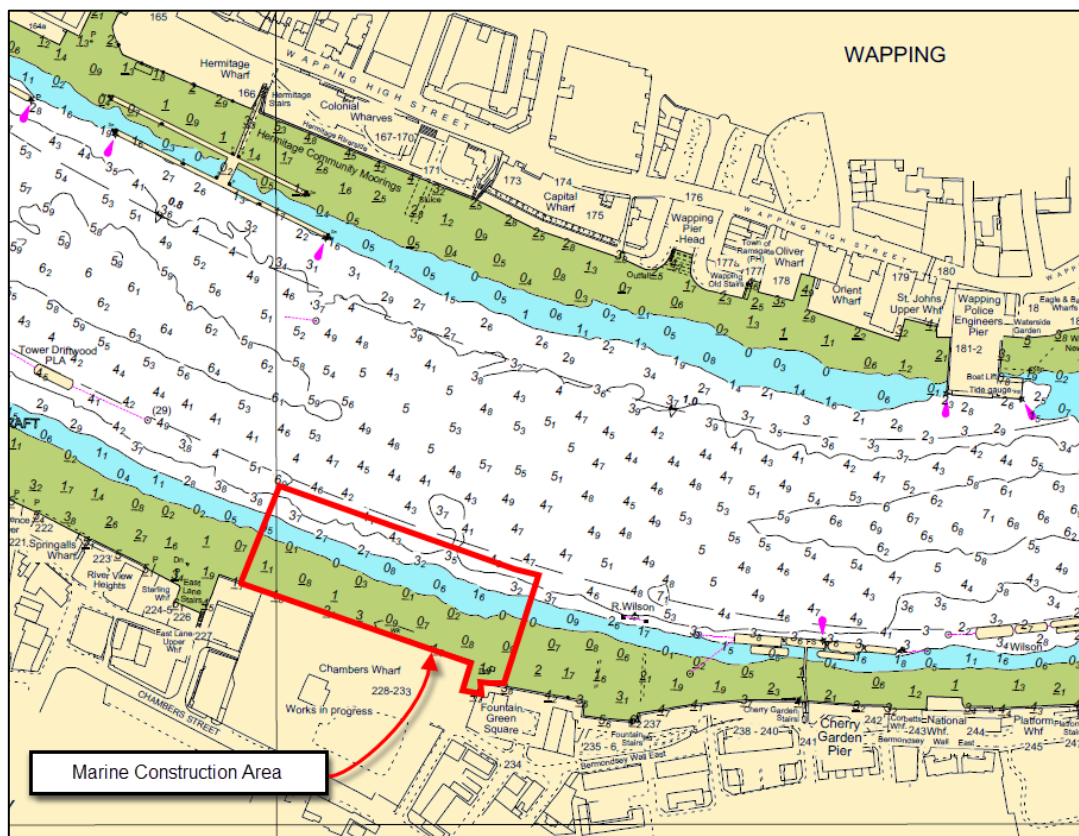
LOWER POOL

CHAMBERS WHARF CONSTRUCTION

This notice replaces M45 of 2016 which has been withdrawn.

Mariners are advised that on contractors working on the Tideway Tunnel Project will continue works which will involve extending Chambers Wharf approximately 60 metres nearer to the South edge of the channel.

Please see the chartlet below depicting the location of the works.



The works which will include dredging, diving, sheet piling and back filling operations will take place using a variety of barges including crane barges, tugs and Multicat vessels and are expected to take approximately 6 months. The vessels involved will maintain a continuous listening watch on VHF channel 14. At times RY flags may be exhibited in conjunction with “proceed with caution / slow down requests” in VTS broadcasts.

No vessels other than those engaged in the works, or those using Chambers Wharf with prior consent of the Harbour Master, shall enter the construction area.

Vessels are requested to be mindful of the nature of the works, their wash when passing the works and to pass at a safe distance.

Further details will be broadcast by London VTS on VHF Channel 14.

16 February 2017

Port of London Authority
London River House, Royal Pier Road,
Gravesend, Kent DA12 2BG

BOB BAKER
CHIEF HARBOUR MASTER



EXPIRY DATE: 31st August 2017
TO RECEIVE FUTURE NOTICES TO MARINERS BY **E-MAIL**,
PLEASE REGISTER VIA OUR WEBSITE www.pla.co.uk
**Telephone calls, VHF radio traffic, CCTV and radar traffic images may
be recorded in the VTS Centres at Gravesend and Woolwich**

