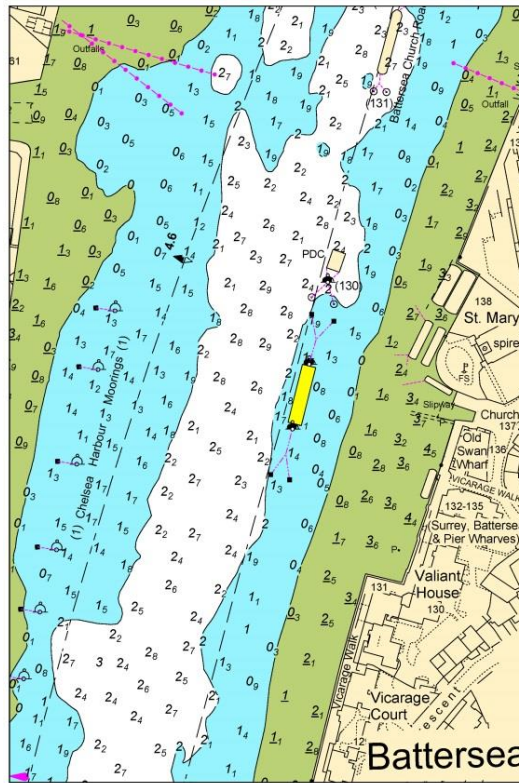


## NOTICE TO MARINERS M12 of 2016

### BATTERSEA REACH POSITION OF TEMPORARY MOORING

This Notice replaces M71 of 2015.

The temporary mooring placed immediately upstream of the Battersea Church Passive Driftwood Collector (see chartlet) will remain in location until 01 August 2016.



Persons in charge of vessels are to navigate with extra caution and keep a continuous watch on VHF Channel 14.

5 February 2016

Port of London Authority  
London River House, Royal Pier Road,  
Gravesend, Kent DA12 2BG

DAVID PHILLIPS  
CHIEF HARBOUR MASTER



TO RECEIVE FUTURE NOTICES TO MARINERS BY **E-MAIL**,  
PLEASE REGISTER VIA OUR WEBSITE [www.pla.co.uk](http://www.pla.co.uk)  
Telephone calls, VHF radio traffic, CCTV and radar traffic images may  
be recorded in the VTS Centres at Gravesend and Woolwich

