

NOTICE TO MARINERS

M104 of 2017

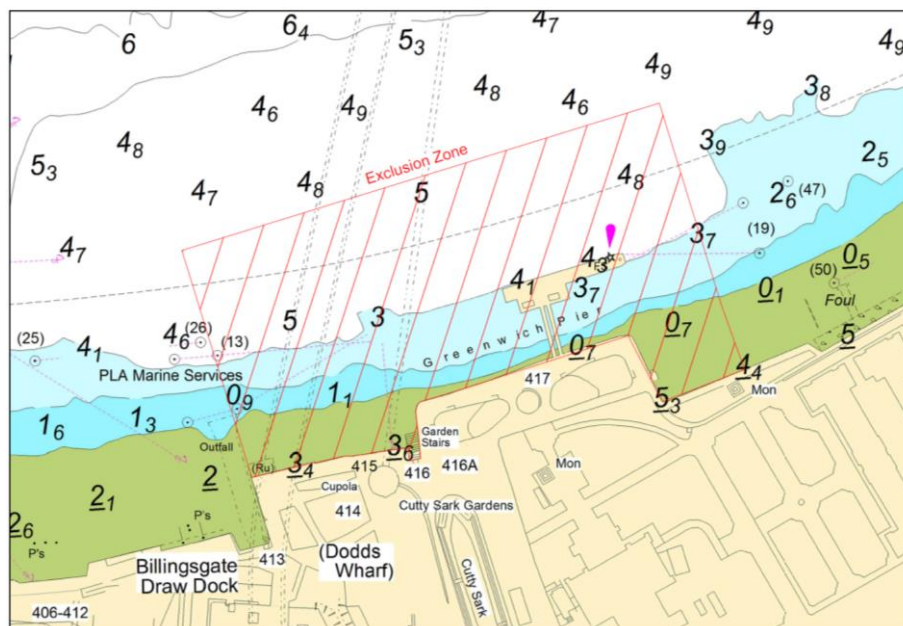
GREENWICH REACH GREENWICH PIER TEMPORARY PIER CLOSURE AND MAINTENANCE WORKS

Contractors working on behalf of London River Services will be conducting maintenance works to Greenwich Pier, which will include the removal and refurbishment of the upper end of the pier and replacement of the mooring chains.

The works will commence on or about **Monday 20th November 2017**, when the Crane Barge TILMAN will be located on the inner upper berth of Greenwich Pier to begin lifting operations of the upper brows. In addition diving operations will be taking place on the upstream end of the pier for short periods and this will be broadcast by London VTS.

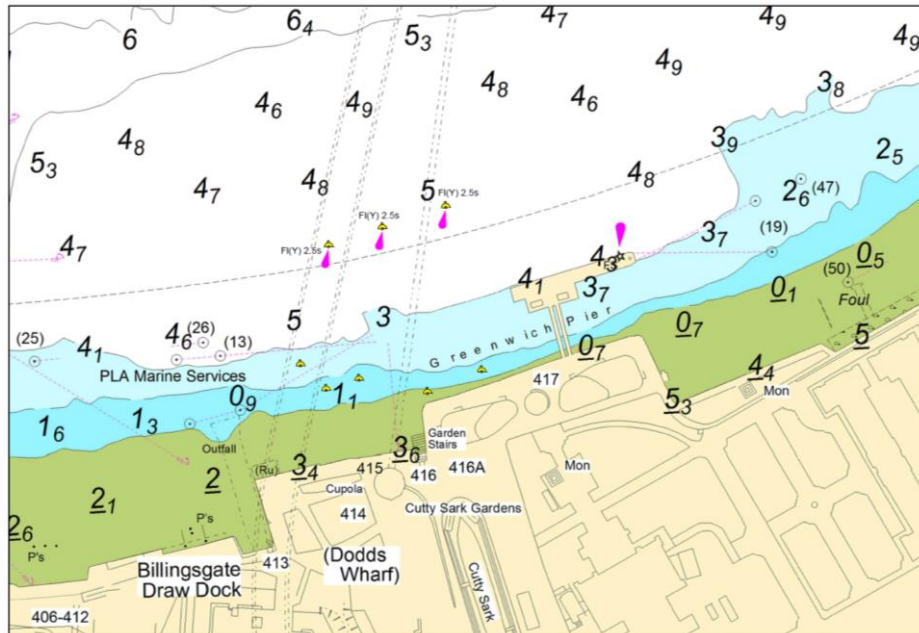
On **Friday 24th November at 09:00**, Greenwich Pier will be closed to navigation to allow for the removal of the upper pontoons and the installation of temporary moorings to support the lower end of the pier. This work will be undertaken by LONDON TITAN accompanied by the DRIFTWOOD II & DRIFTWOOD III. All vessels involved in the works will maintain a continuous listening watch on VHF channel 14.

During these works, a temporary exclusion zone will be established extending 75m from Greenwich Pier, as detailed in the chartlet below.



The lower end of Greenwich Pier is expected to re-open to navigation on **Saturday 25th November at 12:00**.

On completion of the temporary moorings and re-opening of the pier, three buoys will be positioned approximately 50m off the upper end of the pier to mark the location of the mooring chains. These buoys will be fitted with navigation lights with characteristics of FI Y 2.5s and only vessels navigating to / from Greenwich Pier should navigate inside these buoys. Additional unlit buoys will be located at the upper end of Greenwich Pier in line with the pier face – please see chartlet below.



While Greenwich Pier is supported by temporary moorings only the minimum propulsion necessary to safely board and discharge passengers should be utilised. This is expected to be for a period of approximately 10 weeks.

Vessels navigating in the vicinity of Greenwich Pier are to do so with particular caution with due regard of the works taking place. London VTS will broadcast requests for vessels to “proceed with caution” or “proceed at slow speed”, as described in the Permanent Notices to Mariners 4 of 2014, as required by the works. International Code flags “Romeo Yankee” will be displayed when this is in effect.

Further details will be broadcast by London VTS on VHF Channel 14.

**13 November
2017**

Port of London Authority
London River House, Royal Pier Road,
Gravesend, Kent DA12 2BG

**BOB BAKER
CHIEF HARBOUR MASTER**



EXPIRY DATE: 31st January 2018
TO RECEIVE FUTURE NOTICES TO MARINERS BY **E-MAIL**,
PLEASE REGISTER VIA OUR WEBSITE www.pla.co.uk
**Telephone calls, VHF radio traffic, CCTV and radar traffic images may
be recorded in the VTS Centres at Gravesend and Woolwich**

