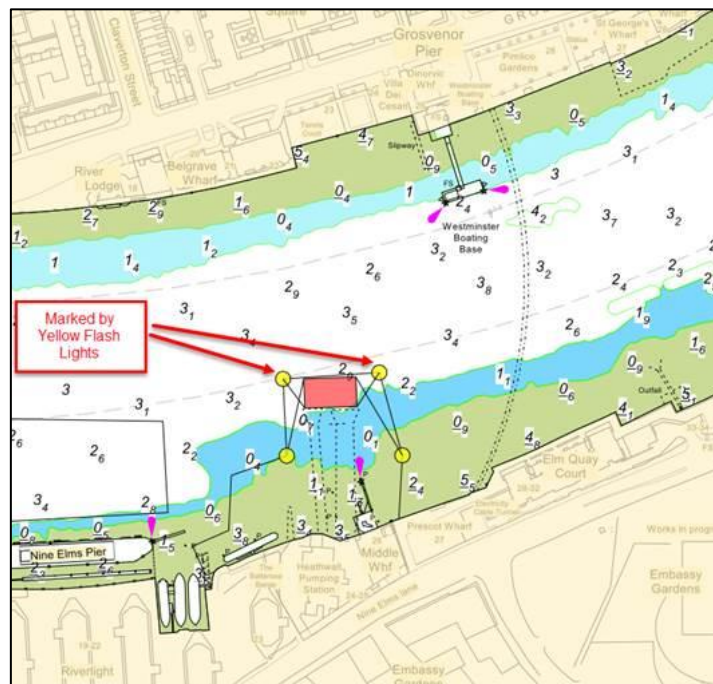


### NINE ELMS REACH HEATHWALL PUMPING STATION TRIAL PITS

Mariners are advised that on or about the 6<sup>th</sup> November 2017 contractors working on the Tideway Tunnel Project will dig seven trial pits and take river wall core samples on the foreshore at Heathwall Pumping Station. These works are expected to take approximately two weeks.

Please see the chartlet below depicting the location of the works.



The works will involve the crane barge DEVON landing and lifting off a digger to and from the foreshore when accessible. The DEVON'S two anchor positions near the channel edge will be marked by yellow pellet buoys with flash yellow lights as indicated on the above chartlet.

The works will take place at suitable tide heights Monday to Friday between the working hours of 0800 to 1800.

In order to maximise the available use of the tides and complete the works in the shortest possible time the works will also be carried out in close proximity to the water's edge. Vessels are requested to be mindful of the nature of the works, the proximity of the tide to

the works, crane lifting operations, their wash when passing the works and slow down accordingly.

London VTS will broadcast requests for vessels to “proceed with caution” or “proceed at slow speed”, as described in Permanent Notices to Mariners 4 of 2014 as required by the works. International Code flags “Romeo Yankee” will be displayed only when this is in effect.

Further details will be broadcast by London VTS on VHF Channel 14.

---

**26 October 2017**

Port of London Authority  
London River House, Royal Pier Road,  
Gravesend, Kent DA12 2BG

**BOB BAKER**  
**CHIEF HARBOUR MASTER**



EXPIRY DATE: 30<sup>th</sup> November 2017  
TO RECEIVE FUTURE NOTICES TO MARINERS BY **E-MAIL**,  
PLEASE REGISTER VIA OUR WEBSITE [www.pla.co.uk](http://www.pla.co.uk)  
**Telephone calls, VHF radio traffic, CCTV and radar traffic images may  
be recorded in the VTS Centres at Gravesend and Woolwich**

