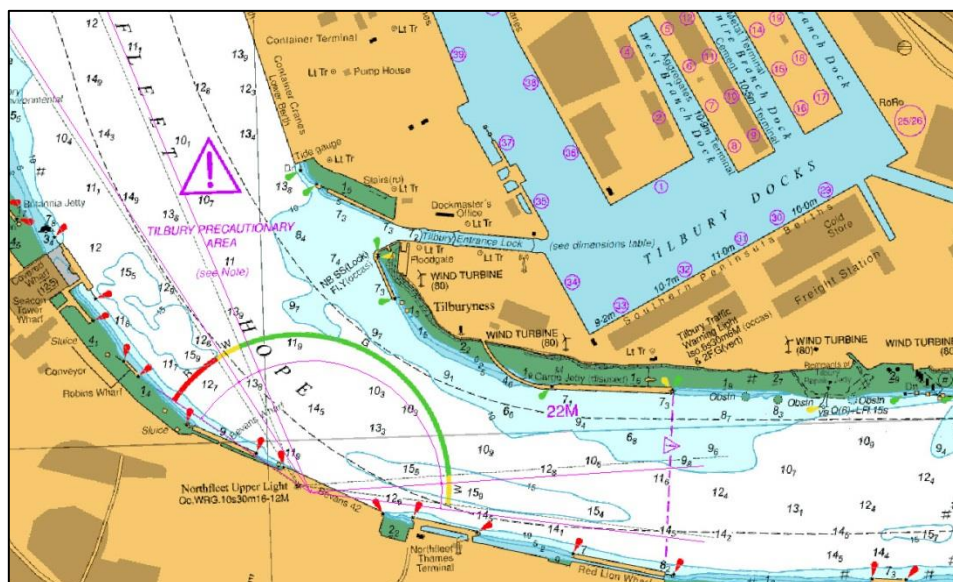


## NOTICE TO MARINERS L7 of 2019

### NORTHFLEET HOPE & GRAVESEND REACH

# NORTHFLEET UPPER LIGHT SECTOR LIGHT RELOCATION

On Tuesday 26<sup>th</sup> February at approximately 18:00 the Northfleet Upper Light will be switched over from its current location on top of the tower block (adjacent to Bevans 42) to the new PLA Radar Tower that has been constructed adjacent to the tower block.



During the switch over there may be times when the light is not exhibited but this is expected to be only momentarily. London VTS will broadcast messages on VHF Channel 68 prior to any changes and confirm once all work is complete.

On completion of this switch over the Northfleet Upper Light the sectors will be slightly out of position to that shown on PLA and Admiralty paper charts and in other nautical publications as well as on ENC cells. Chart corrections will be issued in due course. The new sectors are shown in magenta on the above chartlet with the following light characteristics being exhibited:

**Oc.WRG.10s.43m.10-7M**

For the latest information contact London VTS on VHF Channel 68 or by telephone on 01474 560311.

**22 February 2019**

Port of London Authority  
London River House, Royal Pier Road,  
Gravesend, Kent DA12 2BG

**BOB BAKER**  
CHIEF HARBOUR MASTER



TO RECEIVE FUTURE NOTICES TO MARINERS BY **E-MAIL**,  
PLEASE REGISTER VIA OUR WEBSITE [www.pla.co.uk](http://www.pla.co.uk)  
Telephone calls, VHF radio traffic, CCTV and radar traffic images may  
be recorded in the VTS Centres at Gravesend and Woolwich  
All Current Notices to Mariners can be found here -  
<http://www.pla.co.uk/Safety/Regulations-and-Guidance/Notices-to-Mariners/Notices-to-Mariners>

