

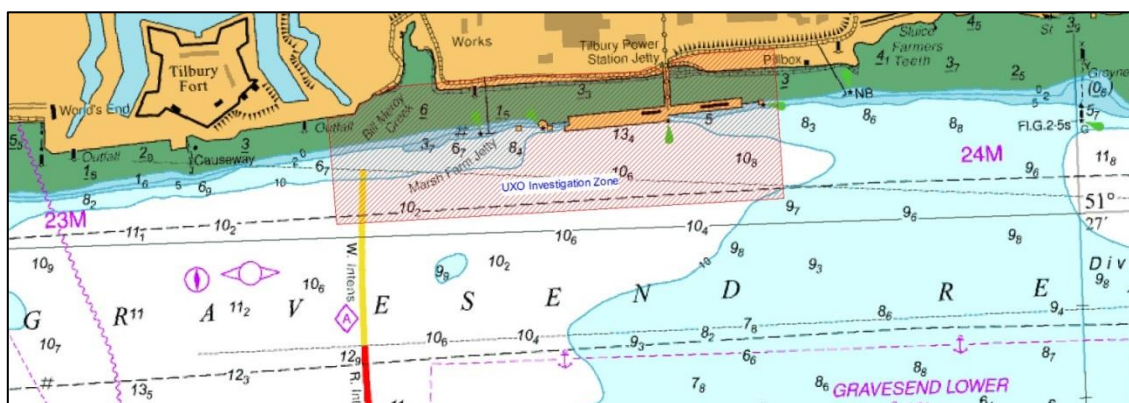
NOTICE TO MARINERS L6 of 2019

GRAVESEND REACH

TILBURY2

UXO SURVEYS & DIVING OPERATIONS

Contractors working on the TILBURY 2 development will carry out UXO surveys off the former Tilbury Power Station Jetty in Gravesend Reach.



Starting the week commencing 25th February the flattop barge NEPTUNE will be positioned at various locations within the UXO investigation area shown above from which diving operations will be carried out with the assistance of a barge mounted long arm reach excavator.

Barge set-up and positioning will be supported by MPV SEADOG which will remain in attendance throughout diving activities.

During the diver operations flag code 'ALPHA' will be displayed along with flag code 'ROMEO YANKEE' in conjunction with a broadcast "Proceed with Caution" request by London VTS at all times diving operations are underway.

No vessel other than those engaged in the surveys will be permitted to enter the UXO Investigation Area.

Survey works are expected to be completed by 10th March 2019.

For the latest information contact London VTS on VHF Channel 68 or by telephone on 01474 560311.

21 February 2019

Port of London Authority
London River House, Royal Pier Road,
Gravesend, Kent DA12 2BG

BOB BAKER
CHIEF HARBOUR MASTER



EXPIRY DATE: 5th April 2019
TO RECEIVE FUTURE NOTICES TO MARINERS BY **E-MAIL**,
PLEASE REGISTER VIA OUR WEBSITE www.pla.co.uk
Telephone calls, VHF radio traffic, CCTV and radar traffic images may
be recorded in the VTS Centres at Gravesend and Woolwich
All Current Notices to Mariners can be found here -
<http://www.pla.co.uk/Safety/Regulations-and-Guidance/Notices-to-Mariners/Notices-to-Mariners>

