

NOTICE TO MARINERS L6 of 2018

ISLE OF GRAIN TO OUTER THAMES ESTUARY

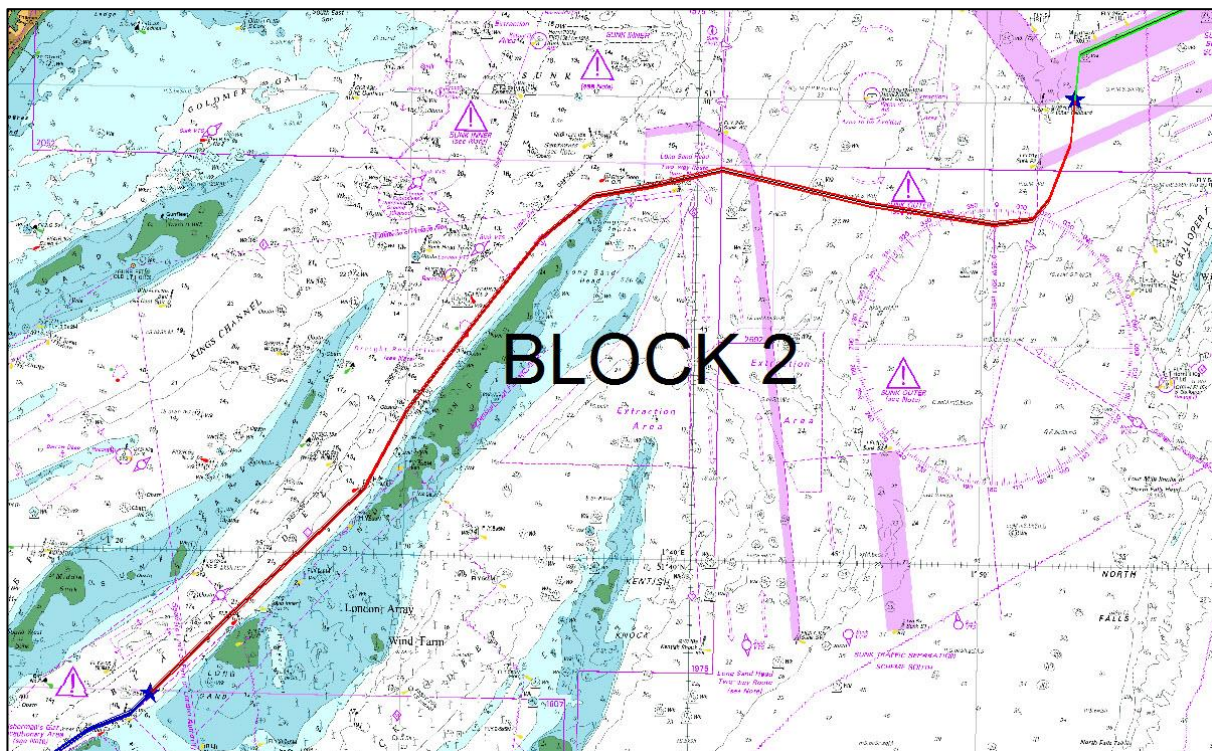
SURVEY OF NEW INTERCONNECTOR CABLE ROUTE

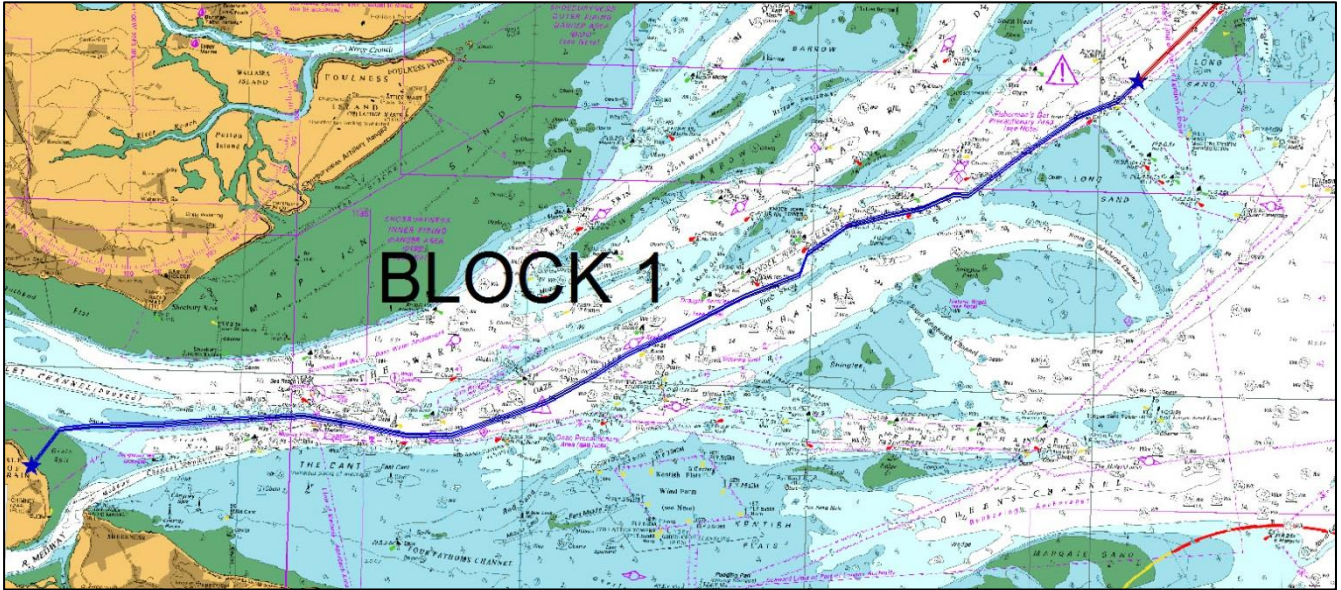
On or about 25th March 2018 underwater survey operations will commence in the Thames Estuary for a new interconnector cable route between the UK and Germany.

The surveys will be carried out by the survey vessels FRANKLIN and DEEP VOLANS, and will consist of multi-beam sonar, towed side-scan sonar, sub-bottom and magnetometer surveys.

Operations are expected to continue for up to 4 weeks.

The survey vessel FRANKLIN is due to commence operations on or around 25th March in Block 2 as shown on the chartlet below. The vessel will be operating 12hrs during daytime. The survey vessel DEEP VOLANS is due to commence operations on or around 3rd April in Block 1 as shown on the chartlet below and will be operating 24 hrs per day.





The detailed surveys will be carried out along a 500m corridor, following the routes shown on the attached chartlets.

The vessels may be deploying underwater survey equipment and during such times will have restricted ability to manoeuvre. This may include towing equipment up to 200m behind them.

Other vessels should pass a minimum distance of 250m from the survey vessels and proceed with caution when passing, and at all times when advised by London VTS.

Further details of when survey operations are in progress will be broadcast by London VTS.

For the latest information please contact London VTS on VHF Channel 69 or by telephone on 01474 560311.

22 March 2018

Port of London Authority
London River House, Royal Pier Road,
Gravesend, Kent DA12 2BG

BOB BAKER
CHIEF HARBOUR MASTER



TO RECEIVE FUTURE NOTICES TO MARINERS BY **E-MAIL**,
PLEASE REGISTER VIA OUR WEBSITE www.pla.co.uk
Telephone calls, VHF radio traffic, CCTV and radar traffic images may
be recorded in the VTS Centres at Gravesend and Woolwich



PORT OF LONDON
AUTHORITY