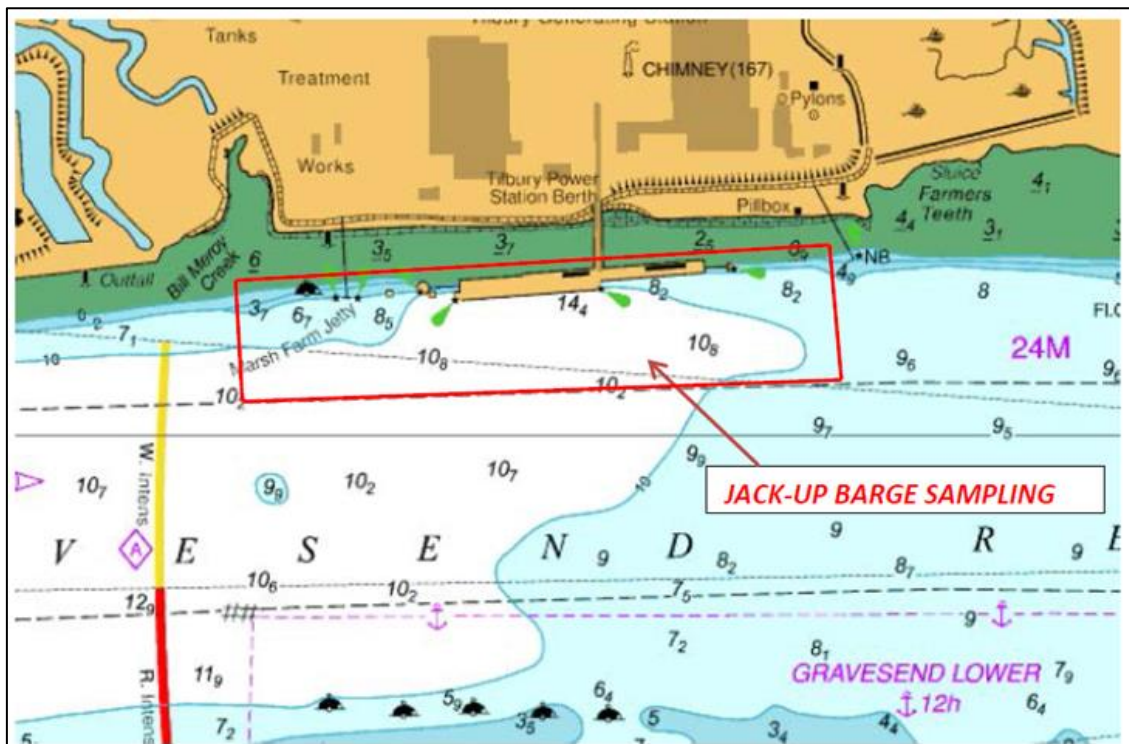


NOTICE TO MARINERS L5 of 2017

GRAVESEND REACH

JACK-UP BARGE SAMPLING

From Thursday 18th May 2017 Fugro Geoservices Ltd will be undertaking intrusive river bed surveys from the jack-up barge “TOPJACK” at various locations in the vicinity of the Tilbury Power Station Jetty on behalf of Port of Tilbury London Limited. Please refer to chartlet below:



“TOPJACK” will be towed into position by the CPBS Tug “SHAKE DOG” where vertical drilling works will be carried out. The CPBS tug “HOUND DOG” will also be in assistance. All vessels will maintain a VHF watch on VHF Channel 68 at all times.

At times the “TOPJACK” will be positioned close to the northern edge of the main navigational channel and vessels are requested to pass the area at REDUCED SPEED and be mindful of wash and draw-off when passing the works during the notified period.

“TOPJACK” will display the shapes and signals as prescribed in the International Regulations for Preventing Collisions at Sea 1972 as required. The code flag signal “RY” will also be displayed throughout the operation.

Further details of when work is being undertaken, will be broadcast by London VTS.

For the latest information contact London VTS on VHF Channel 68 or by telephone on 01474 560311.

10 May 2017

Port of London Authority
London River House, Royal Pier Road,
Gravesend, Kent DA12 2BG

BOB BAKER
CHIEF HARBOUR MASTER



Expiry Date: Friday 16th June 2017
TO RECEIVE FUTURE NOTICES TO MARINERS BY **E-MAIL**,
PLEASE REGISTER VIA OUR WEBSITE www.pla.co.uk
**Telephone calls, VHF radio traffic, CCTV and radar traffic images may
be recorded in the VTS Centres at Gravesend and Woolwich**

