

NOTICE TO MARINERS L27 of 2017

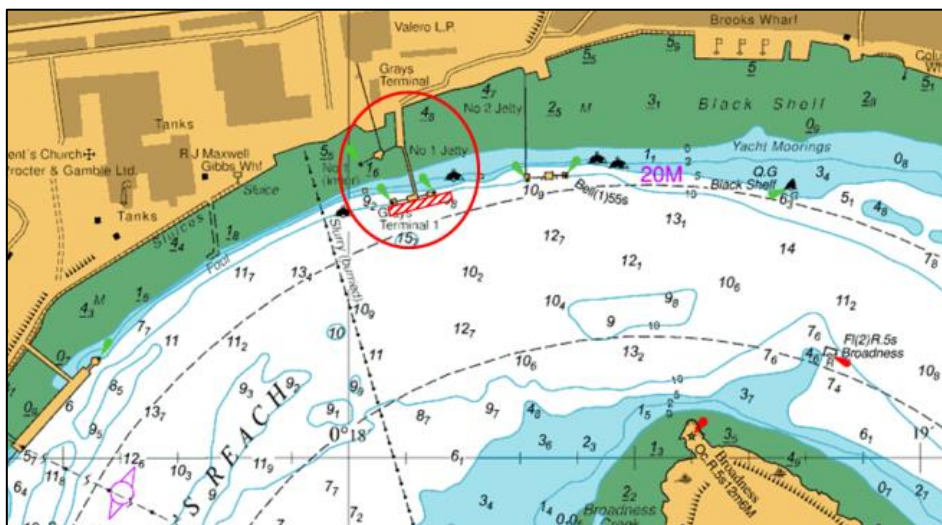
ST CLEMENTS REACH GRAYS TERMINAL JETTY WORKS

THIS NTM SUPERSEDES AND CANCELS NTM L24 OF 2017

Mariners are advised that commencing on Thursday 9th November work will commence on GRAYS TERMINAL JETTY NO.1 for the construction work piling and steel erection.

The work will be carried out from the HAVEN SEAFORTH Spudleg Barge. In addition to this WILLCARRY 1750 Barge flat top pontoon will be present. The tug HORTON or MOLLY G will be in attendance and maintaining a listening watch on VHF Channel 68.

These works will be carried out between 0700 and 1900 during which time mariners are requested to be mindful of the speed and wash when passing this area.



For the latest information contact London VTS on VHF Channel 68 or by telephone on 01474 560311.

**7 November
2017**

Port of London Authority
London River House, Royal Pier Road,
Gravesend, Kent DA12 2BG

**BOB BAKER
CHIEF HARBOUR MASTER**



TO RECEIVE FUTURE NOTICES TO MARINERS BY **E-MAIL**,
PLEASE REGISTER VIA OUR WEBSITE www.pla.co.uk
Telephone calls, VHF radio traffic, CCTV and radar traffic images may
be recorded in the VTS Centres at Gravesend and Woolwich



PORT OF LONDON
AUTHORITY