

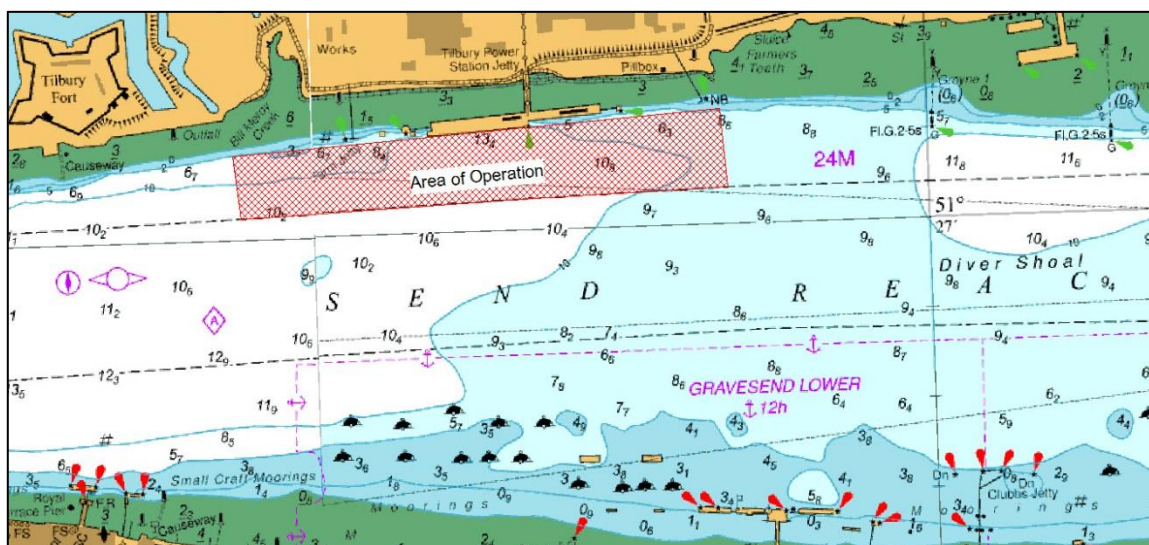
## **NOTICE TO MARINERS** L23 of 2019

### GRAVESEND REACH

### TILBURY2

### MARINE WORKS

This notice supersedes L20



Numerous marine works are underway as part of the TILBURY2 development. Current activities and activities due to commence shortly are summarised below. This notice will be superseded as new works commence or if there are changes to the works noted below.

#### **PILING WORKS** (*Underway and due for completion in October 2019*)

Piling works continue for the creation of 8 new berthing dolphins totalling 40 tubular piles on the downriver end of the former Tilbury Power Station. 7 new berthing dolphins totalling 35 tubular piles are also being installed up river of the jetty to create two new RoRo berths. Two additional restraining piles are also being installed for the RoRo pontoon.

Marine Plant involved in these operations includes the 75m flat top barge NEPTUNE equipped with a 320T crawler crane and two transfer & storage barges. All barge movements will be carried out by the multi-cat vessel SEADOG, with the safety boat EOL1 in attendance.

#### **TRAILER HOPPER SUCTION DREDGING** (*Starts week commencing 10<sup>th</sup> June 2019*)

The trailing suction hopper dredger SHOREWAY will commence further dredging operations. These will run 24 hrs per day, 7 days per week for approximately 2 weeks, with the vessel spending approximately 1 to 3 hours dredging the RoRo and CMAT berth boxes followed by a period of transit to the approved disposal site outside port limits before returning to repeat the process. The dredger will remain within the marked area of operation shown on the chart above and will be restricted in its ability to manoeuvre showing the appropriate signals by day and by night. Movements of the dredger and other marine plant can be obtained from London VTS on VHF Channel 68.

**REMOVAL OF MARSH FARM JETTY AND MOORING DOLPHIN** *(Expected week commencing 10<sup>th</sup> June 2019)*

To allow for the construction of the new RoRo berth, Marsh Farm Jetty and the upper most mooring dolphin will be removed. During the removal, lifting operations will take place accompanied by International Code flags "Romeo Yankee" will be exhibited in conjunction with a "Proceed with Caution" being broadcast by London VTS." The removal works are expected to take up to 6 weeks. Barge movements will be carried out the multi-cat vessel SEADOG.

**GENERAL INFORMATION**

At times International Code flags "Romeo Yankee" will be exhibited by the vessels involved in conjunction with a "Proceed with Caution" being broadcast by London VTS.

All vessels involved with the works will maintain a continuous listening watch on VHF Channel 68.

For the latest information contact London VTS on VHF Channel 68 or by telephone on 01474 560311.

---

**7 June 2019**

Port of London Authority  
London River House, Royal Pier Road,  
Gravesend, Kent DA12 2BG

**BOB BAKER**  
**CHIEF HARBOUR MASTER**



TO RECEIVE FUTURE NOTICES TO MARINERS BY **E-MAIL**,  
PLEASE REGISTER VIA OUR WEBSITE [www.pla.co.uk](http://www.pla.co.uk)  
**Telephone calls, VHF radio traffic, CCTV and radar traffic images may  
be recorded in the VTS Centres at Gravesend and Woolwich**  
All Current Notices to Mariners can be found here -  
<http://www.pla.co.uk/Safety/Regulations-and-Guidance/Notices-to-Mariners/Notices-to-Mariners>

