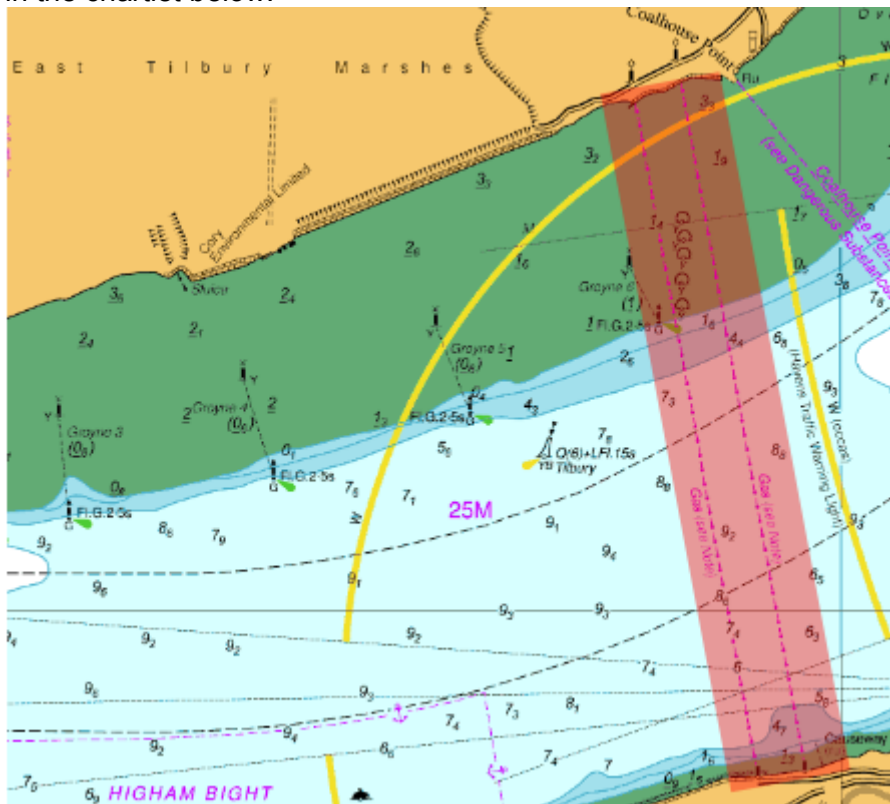


NOTICE TO MARINERS L21 of 2020

GRAVESEND REACH COALHOUSE POINT SURVEY OPERATIONS

On or around 30th November 2020, survey operations will take place on two gas pipelines located between Coalhouse Point and Shornmead Fort at the eastern end of Gravesend Reach. Survey works are expected to be completed by 2nd December 2020. The survey area is indicated in the chartlet below:



Survey vessel EGS WATCHFUL will undertake operations involving towage of survey equipment up to 25m astern of the vessel. Additionally, as part of a cathodic protection survey, the EGS WATCHFUL will stream a wire across the width of the river to coincide with high and low tides. The wire will sink to the riverbed allowing passage, however to facilitate the streaming operation, vessels may be subject to traffic management by London VTS who will aim to minimise impact to river users.

The EGS WATCHFUL will, at all times during the surveys, exhibit the lights and shapes prescribed by the International Regulations for Preventing Collisions at Sea and will maintain a listening watch on VHF channel 68.

All vessels are required to reduce speed and proceed with caution whilst passing the EGS WATCHFUL when survey work is underway, and at all times when advised by London VTS.

Further details will be broadcast by London VTS on VHF Channel 68.

**24 November
2020**

Port of London Authority
London River House, Royal Pier Road,
Gravesend, Kent DA12 2BG

**Miles Featherstone
Deputy Harbour Master**



EXPIRY DATE: 7th December 2020
TO RECEIVE FUTURE NOTICES TO MARINERS BY **E-MAIL**,
PLEASE REGISTER VIA OUR WEBSITE www.pla.co.uk
Telephone calls, VHF radio traffic, CCTV and radar traffic images may
be recorded in the VTS Centres at Gravesend and Woolwich
All Current Notices to Mariners can be found here -
<http://www.pla.co.uk/Safety/Regulations-and-Guidance/Notices-to-Mariners/Notices-to-Mariners>

