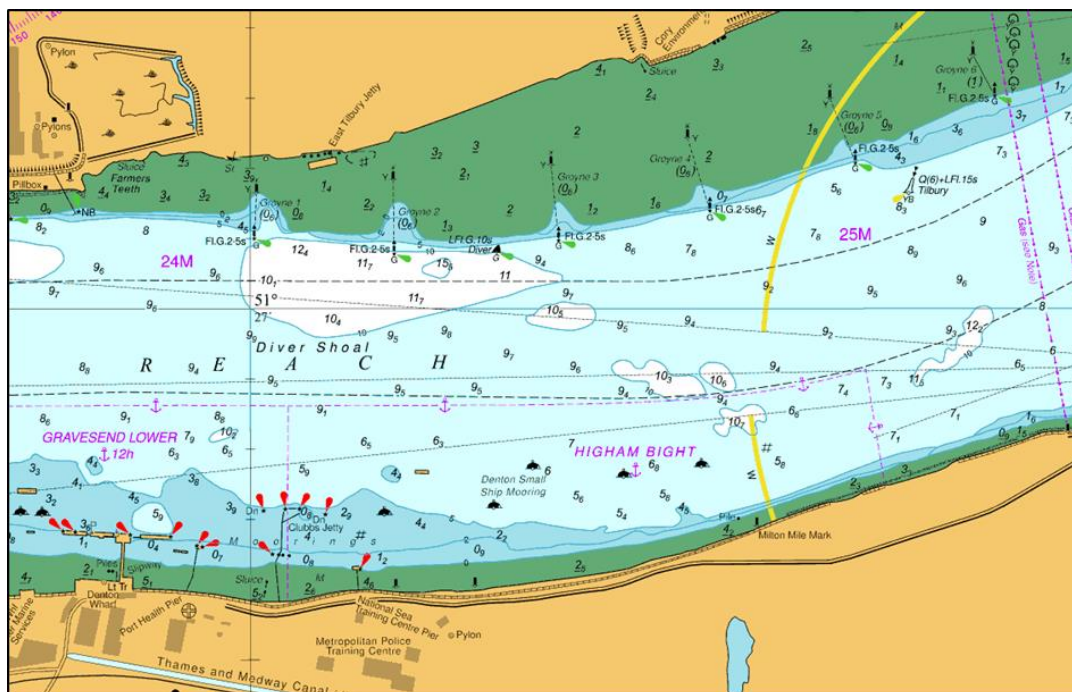


## NOTICE TO MARINERS L19 of 2018

### GRAVESEND REACH LOWER SUBSURFACE TOWED SURVEY EQUIPMENT

Starting on 3<sup>rd</sup> October 2018, a PLA Survey vessel will be deploying subsurface towed survey equipment up to 200m behind the vessel. The vessel will run lines approximately East to West, and North to South. The operations will be in Gravesend Reach Lower, shown below. The work will continue until 30<sup>th</sup> November 2018.



When carrying out surveys both vessels will be restricted in their ability to manoeuvre and will display lights and shapes in accordance with the International Regulations for Preventing Collisions at Sea 1972 (as amended) Rule 27 b. The vessels will maintain a listening watch on VHF CH 68 throughout the working period.

All vessels are required to proceed with caution past these vessels when work is underway and at all times when advised by London VTS.

For the latest information contact London VTS on VHF Channel 68 or by telephone on 01474 560311.

**24<sup>th</sup> September  
2018**

Port of London Authority  
London River House, Royal Pier Road,  
Gravesend, Kent DA12 2BG

**BOB BAKER  
CHIEF HARBOUR MASTER**



EXPIRY DATE: 30<sup>th</sup> November 2018  
TO RECEIVE FUTURE NOTICES TO MARINERS BY **E-MAIL**,  
PLEASE REGISTER VIA OUR WEBSITE [www.pla.co.uk](http://www.pla.co.uk)  
**Telephone calls, VHF radio traffic, CCTV and radar traffic images may  
be recorded in the VTS Centres at Gravesend and Woolwich**

