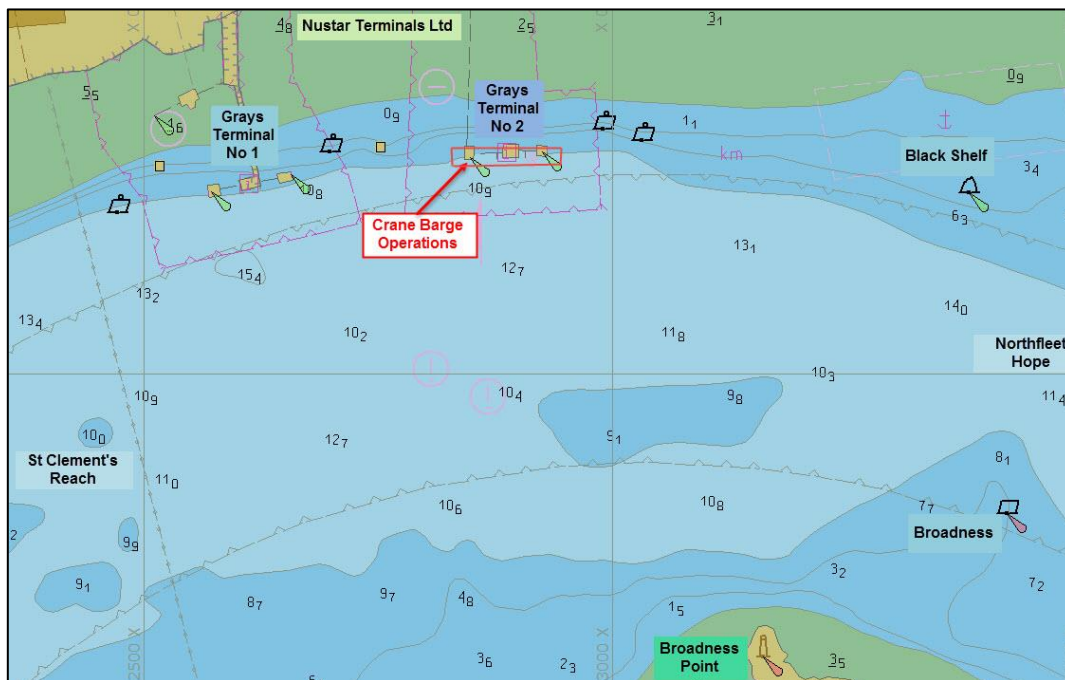


NOTICE TO MARINERS L11 of 2017

ST CLEMENTS REACH FENDER REPAIRS GRAYS TERMINAL

Mariners are advised that commencing on 3rd July emergency repair work will be carried out to fender facing timbers on the dolphins at Grays Terminal Jetty No. 2. The work is expected to last 5 days.

The repair work will be carried out from a crane barge alongside the berth with the tug 'Horton' in attendance when manoeuvring the pontoon and the 'Nicola-G' in attendance as safety boat.



All vessels are required to be mindful of their wash and the effects of draw-of when passing the berth, and follow any speed restrictions at all times when advised by London VTS.

Further details of when work is being undertaken, will be broadcast by London VTS.

For the latest information contact London VTS on VHF Channel 68 or by telephone on 01474 560311.

26 June 2017

Port of London Authority
London River House, Royal Pier Road,
Gravesend, Kent DA12 2BG

BOB BAKER
CHIEF HARBOUR MASTER



EXPIRY DATE: 9th July 2017
TO RECEIVE FUTURE NOTICES TO MARINERS BY **E-MAIL**,
PLEASE REGISTER VIA OUR WEBSITE www.pla.co.uk
**Telephone calls, VHF radio traffic, CCTV and radar traffic images may
be recorded in the VTS Centres at Gravesend and Woolwich**

