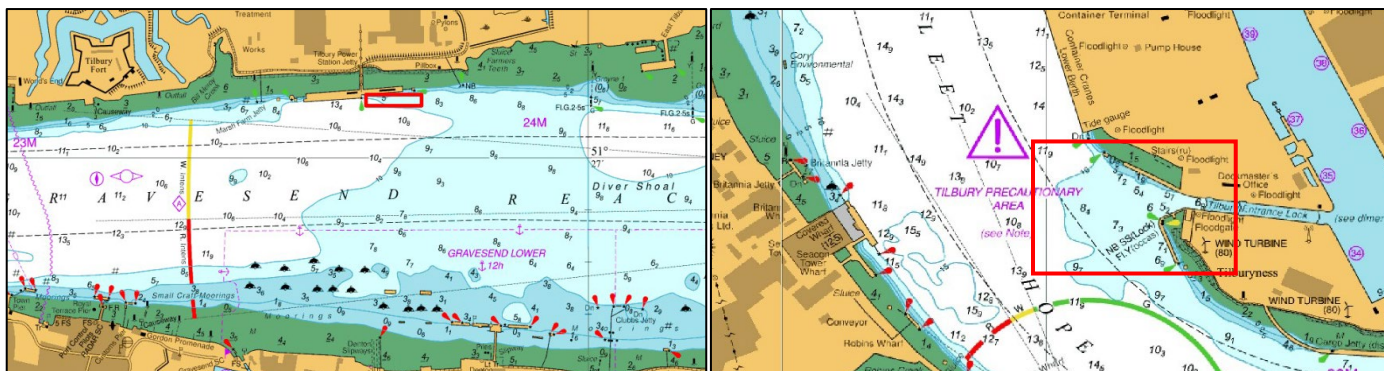


NORTHFLEET HOPE TO GRAVESEND REACH **DREDGING OPERATIONS**

On or around 16th January 2024 the vessel **AQUADELTA** will commence water injection dredging operations at the entrance to Tilbury Dock & Tilbury CMAT.

Following that, the vessel **REIMERSWAAL** will begin suction dredging at Tilbury CMAT with an estimated completion date on or around 23rd January 2024.

Dredging activities from the vessel **REIMERSWAAL** will occur during all states of the tide, while the vessel **AQUADELTA** will only take place on ebb tides.



Requirements to proceed with caution or at slow speed will be made in accordance with the procedure set out in the Port of London Authority's [Port Information Guide](#), under 'London VTS', 'Section 4'.

The vessel is required to display lights and signals as per the International Regulations for Preventing Collisions at Sea and maintain a listening watch on VHF channel 68.

For the latest information, contact **London VTS** on **VHF channel 68** or telephone 01474 562215.

11/01/2024

Port of London Authority
London River House, Royal Pier Road,
Gravesend, Kent DA12 2BG

LYN KINDLEN-FUNNELL
Harbour Master

EXPIRY DATE: 26/01/2024

TO RECEIVE FUTURE NOTICES TO MARINERS BY **E-MAIL**,
PLEASE REGISTER VIA OUR WEBSITE pla.co.uk/Subscription-to-Newsletter

Telephone calls, VHF radio traffic, CCTV and radar traffic images may be recorded in the
VTS Centres at Gravesend and Woolwich



View all Active Notice to Mariners
using the above QR Code