



PORT OF LONDON
AUTHORITY

Port of London Authority
Chart Correction Advice
Date: 24th August, 2023



CCA No: 2023/20

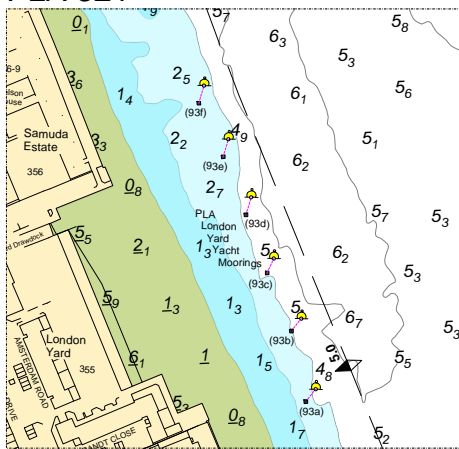
Charts: Greenwich Reach to Blackwall Reach
and Blackwall Reach to Bugsby's Reach

PLA Chart No. 321
HO Ref No. 113-321-190
Previous Chart Correction: 2023/8

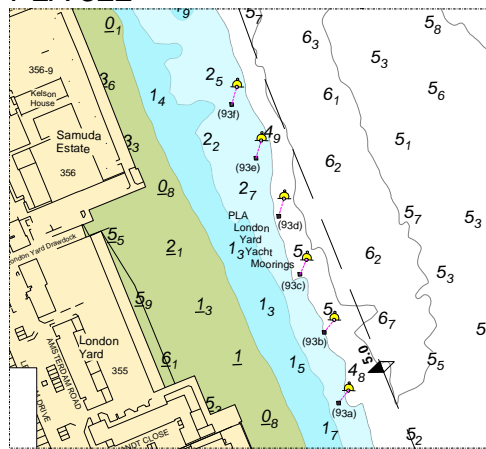
The accompanying block correction shows:
PLA London Yard Yacht Moorings
New Mooring (23a) and revised numbering (23b-f)

PLA Chart No. 322
HO Ref No. 113-322-360
Previous Chart Correction: 2022/11

PLA 321



PLA 322



For further information see the PLA hydrographic service website:

<http://www.pla.co.uk/Safety/PLA-Hydrographic-Service-Published-Surveys>