



PORT OF LONDON
AUTHORITY

Port of London Authority
Chart Correction Advice
Date: 22nd August, 2022

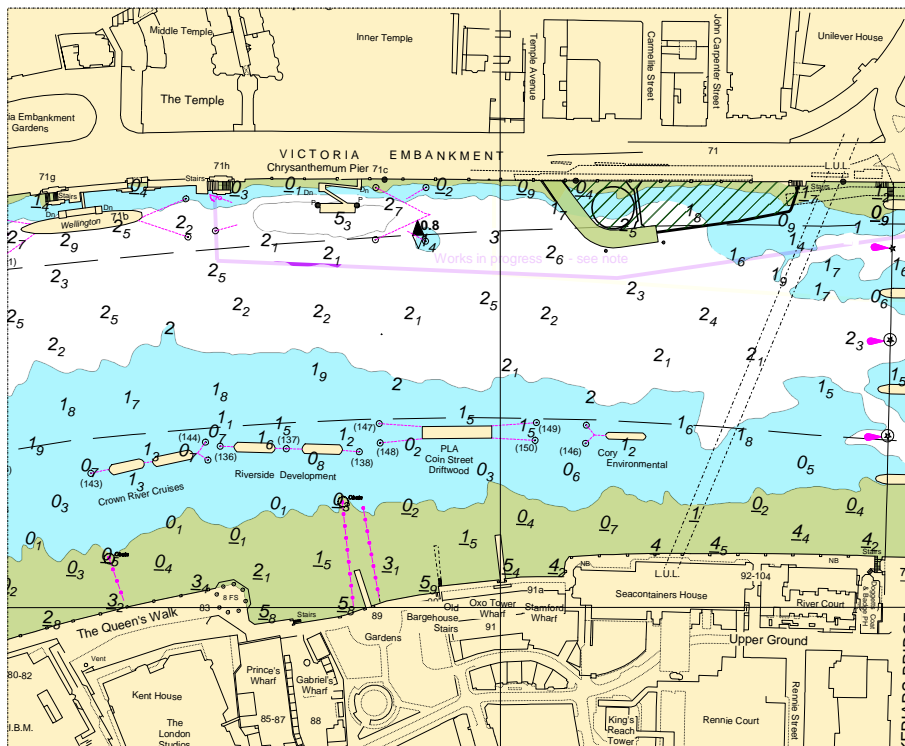


CCA No: 2022/7

Chart: Kings Reach

PLA Chart No. 317
HO Ref No. 113-317/130
Previous Chart Correction: 2020/16

The accompanying block correction shows:
Revised Mooring arrangement PLA Coin Street Driftwood & misc depths in the vicinity



For further information see the PLA hydrographic service website:

<http://www.pla.co.uk/Safety/PLA-Hydrographic-Service-Published-Surveys>