



PORT OF LONDON
AUTHORITY

Port of London Authority
Chart Correction Advice
Date: 09/11/2021

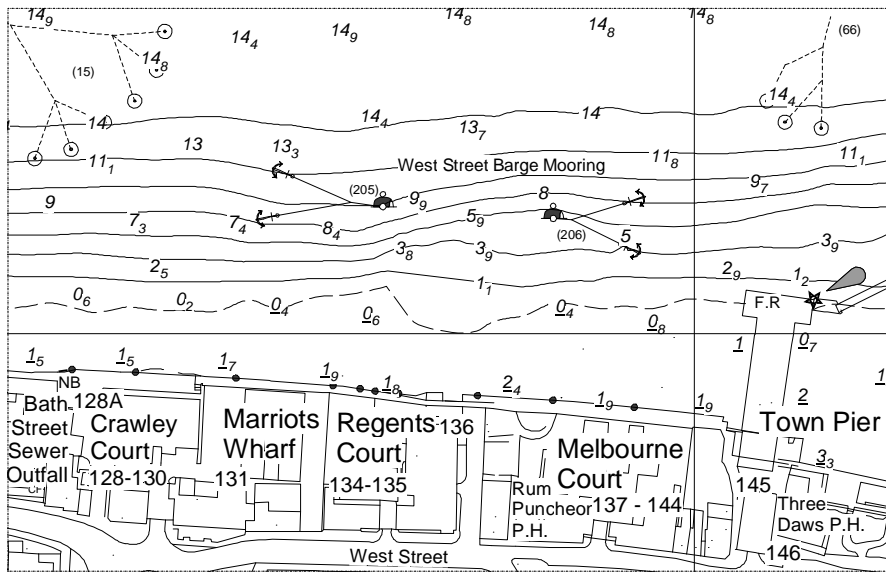


CCA No: 2021/26

Chart: Gravesend Reach (Upper)

PLA Chart No. 336
HO Ref No. 113-336-435
Previous Chart Correction: 2021/24

The accompanying block correction shows:
New West Street Barge Mooring, Gravesend



For further information see the PLA hydrographic service website:

<http://www.pla.co.uk/Safety/PLA-Hydrographic-Service-Published-Surveys>