



Port of London Authority  
 Chart Correction Advice  
 Date: 16th January, 2020



**CCA No: 2020/3**

Chart: Barking & Halfway Reaches

PLA Chart No. 326

HO Ref No. 113-326-209

Previous Chart Correction: 2020/2

The accompanying blocks correction show:

Revised Moorings and Depths at

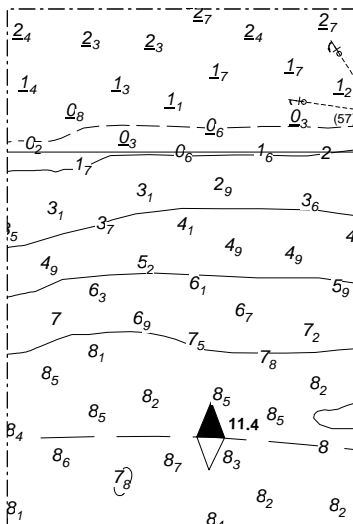
RMC Dagenham No8 Jetty

PLA Chart No. 327

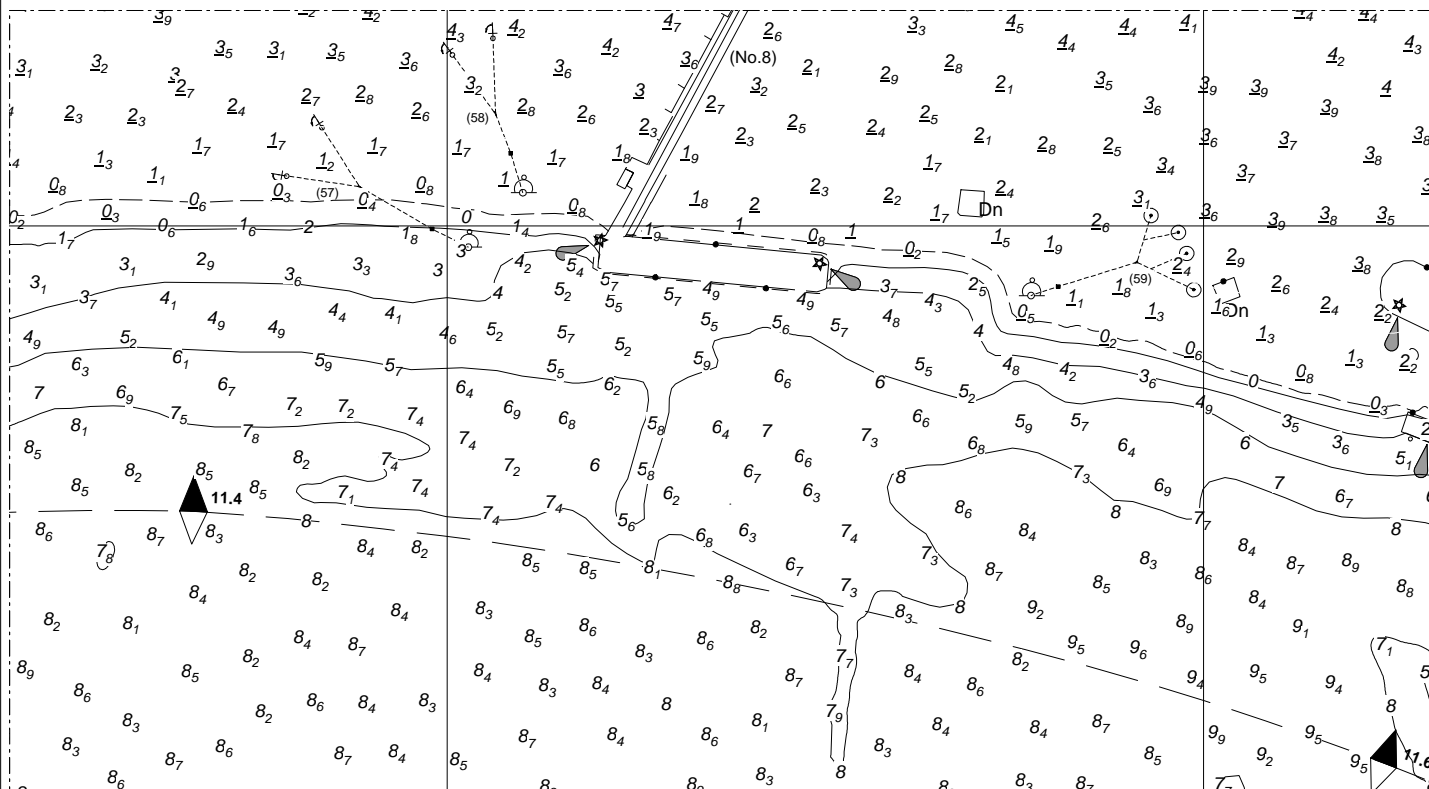
HO Ref No. 113-327-190

Previous Chart Correction: 2018/01

PLA 326



PLA 327



For further information see the PLA hydrographic service website:

<http://www.pla.co.uk/Safety/PLA-Hydrographic-Service-Published-Surveys>