



PORT OF LONDON
AUTHORITY

Port of London Authority
Chart Correction Advice
Date: 2nd October, 2020



CCA No: 2020/22

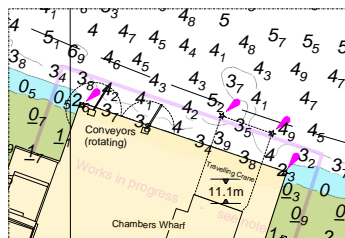
Chart: Upper Pool

PLA Chart No. 318
HO Ref No. 113-318-266
Previous Chart Correction: 2020/05

The accompanying block correction shows:

Chambers Wharf

TTT Works in Progress reinstated, Gantry crane clearance height 11.1m & Least Depth 3.4m



For further information see the PLA hydrographic service website:

<http://www.pla.co.uk/Safety/PLA-Hydrographic-Service-Published-Surveys>