



PORT OF LONDON  
AUTHORITY

Port of London Authority  
Chart Correction Advice  
Date: 26/08/2020

**CCA No: 2020/19**



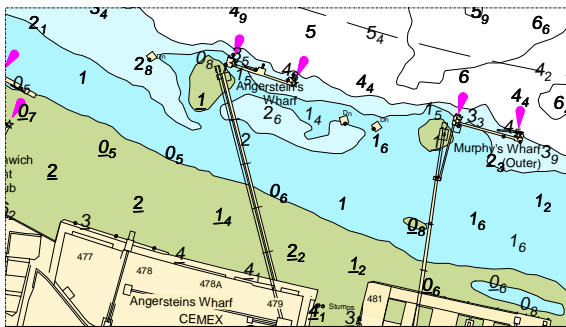
Chart: Woolwich Reach Upper

PLA Chart No. 322  
HO Ref No. 113-322-360  
Previous Chart Correction: 2020/12

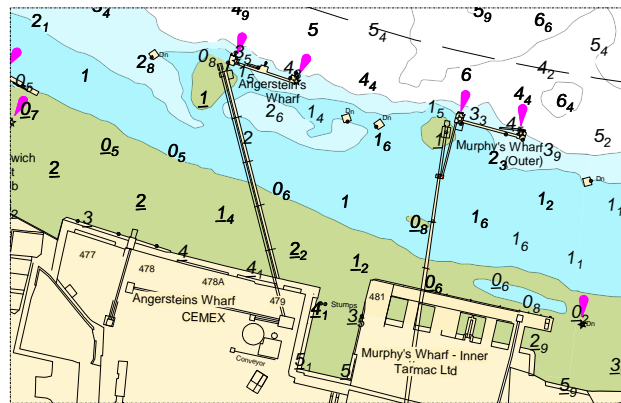
PLA Chart No. 323  
HO Ref No. 113-323-301  
Previous Chart Correction: 2020/13

The accompanying block correction shows:  
Revised fendering at Angersteins & Murphy's Jetties

PLA 322



PLA 323



For further information see the PLA hydrographic service website:

<http://www.pla.co.uk/Safety/PLA-Hydrographic-Service-Published-Surveys>