



PORT OF LONDON
AUTHORITY

Port of London Authority
Chart Correction Advice
Date: 4th June, 2020

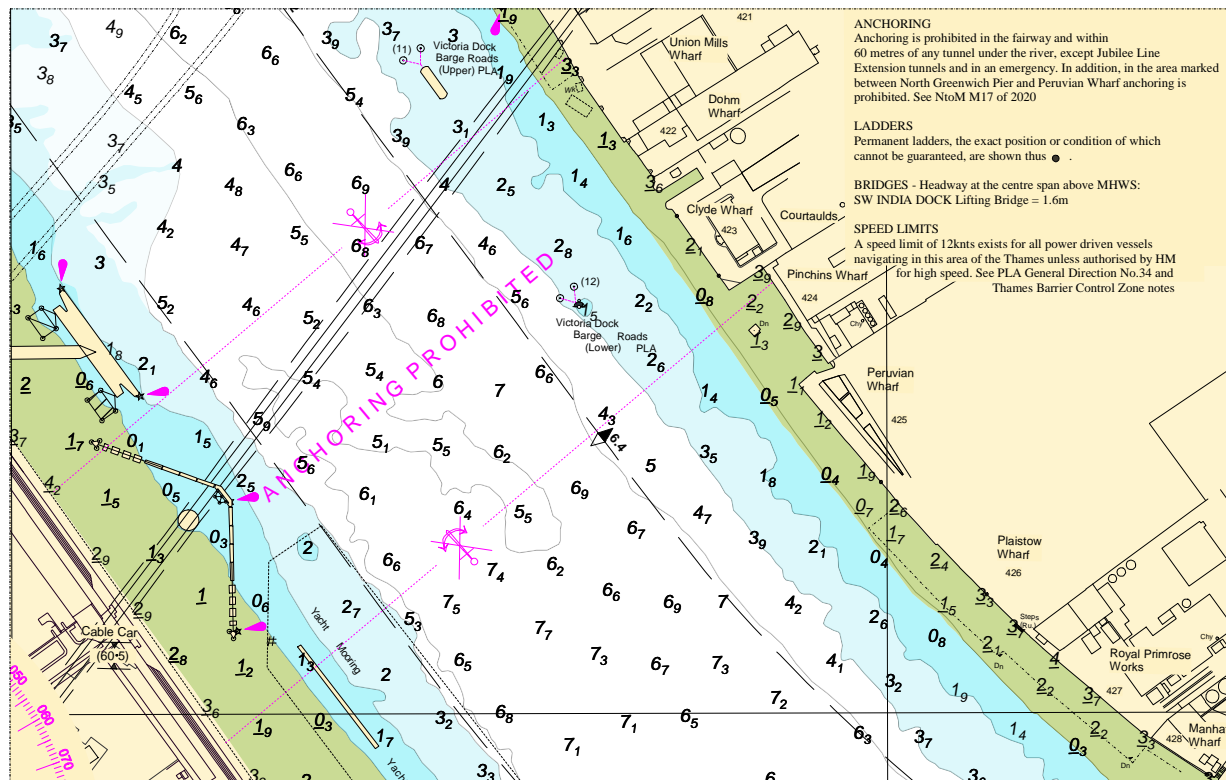


CCA No: 2020/12

Chart: Blackwall Reach to Bugsby's Reach

PLA Chart No. 322
HO Ref No. 113-322-360
Previous Chart Correction: 2019/18

The accompanying block correction shows:
A Prohibited Anchoring area for borehole operations. NtM M17 or 2020



For further information see the PLA hydrographic service website:

<http://www.pla.co.uk/Safety/PLA-Hydrographic-Service-Published-Surveys>