



Port of London Authority
 Chart Correction Advice
 Date: 15th February, 2019

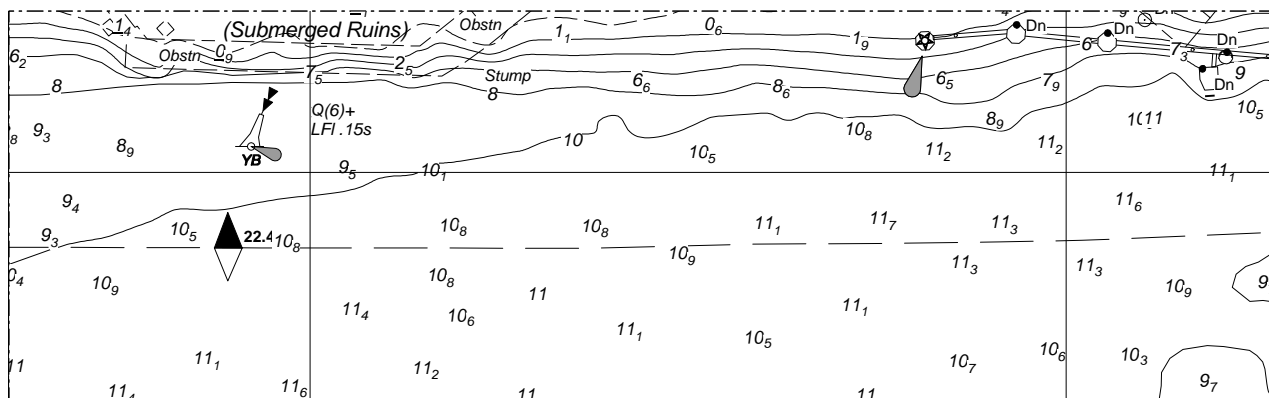
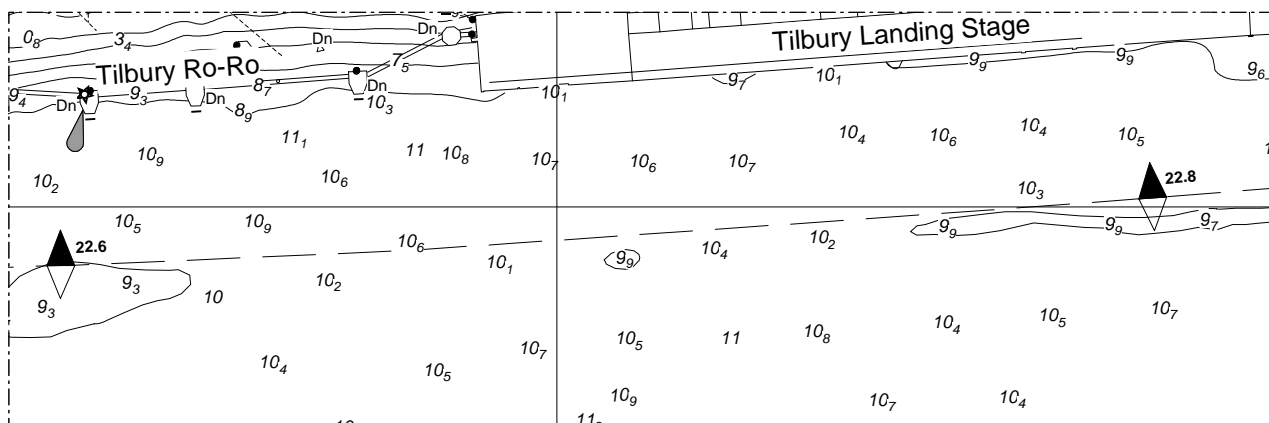
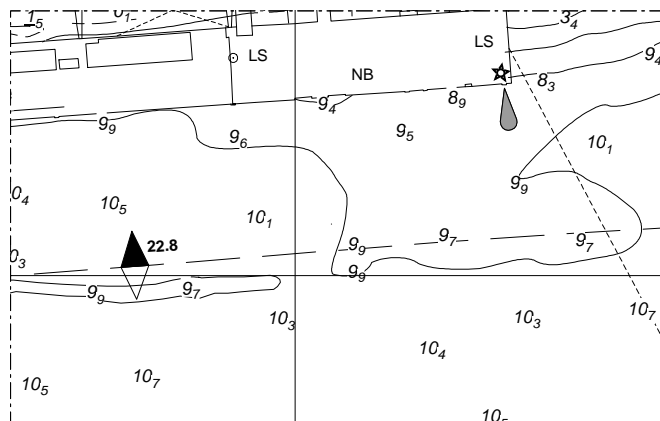


CCA No: 2019/4

Chart: Gravesend Reach (Middle)

PLA Chart No. 336
 HO Ref No. 113-336-391
 Previous Chart Correction: 2018/25

The accompanying block correction shows:
 Revised Depths off Tilbury Landing Stage & Ro-Ro Jetty



For further information see the PLA hydrographic service website:

<http://www.pla.co.uk/Safety/PLA-Hydrographic-Service-Published-Surveys>