



Port of London Authority
Chart Correction Advice
Date: 7th November, 2018



CCA No: 2019/34

Chart: Northfleet Hope & Gravesend Reach (Upper)

PLA Chart No. 334
HO Ref No. 113-334-284
Previous Chart Correction: 2019/16

PLA Chart No. 335
HO Ref No. 113-335-775
Previous Chart Correction: 2019/31

The accompanying block correction shows:
Removal of Mooring Number 65 and updated depths in the vicinity of Halls Jetty, Northfleet

Chart PLA 334

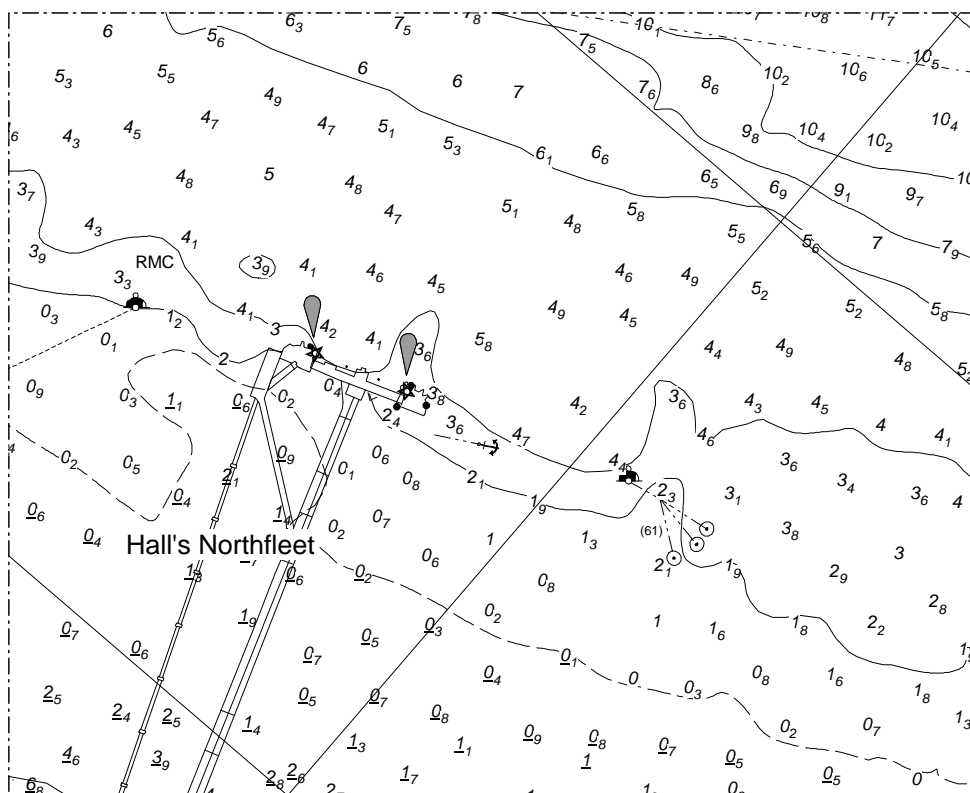
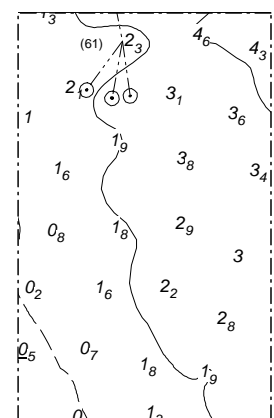


Chart PLA 335



For further information see the PLA hydrographic service website:

<http://www.pla.co.uk/Safety/PLA-Hydrographic-Service-Published-Surveys>