



PORT OF LONDON  
AUTHORITY

Port of London Authority  
Chart Correction Advice  
Date: 9th October, 2019

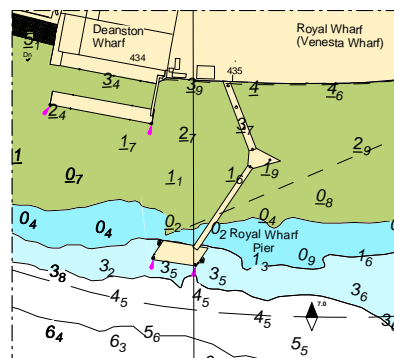


**CCA No: 2019/32**

Chart: Woolwich Reach (Upper)

PLA Chart No. 323  
HO Ref No. 113-323-301  
Previous Chart Correction: 2019/18

The accompanying block correction shows:  
New jetty structure "Royal Wharf Pier"



For further information see the PLA hydrographic service website:

<http://www.pla.co.uk/Safety/PLA-Hydrographic-Service-Published-Surveys>