



Port of London Authority  
Chart Correction Advice  
Date: 27th September, 2019

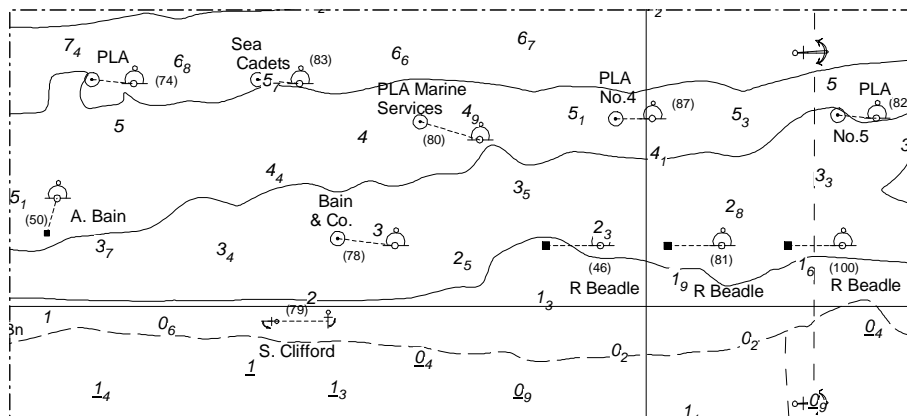


**CCA No: 2019/25**

Chart: Gravesend Reach (Middle)

PLA Chart No. 336  
HO Ref No. 113-336-422  
Previous Chart Correction: 2019/17

The accompanying block correction shows:  
New Moorings off Gordon Promenade, Gravesend. Nos. (46), (81) & (100)



For further information see the PLA hydrographic service website:

<http://www.pla.co.uk/Safety/PLA-Hydrographic-Service-Published-Surveys>