



Port of London Authority
Chart Correction Advice
Date: 14th August, 2019



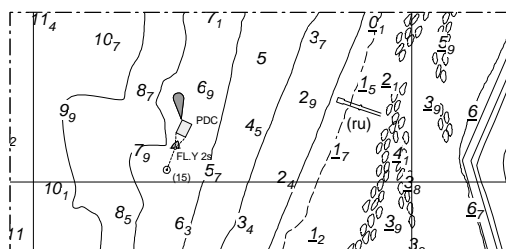
CCA No: 2019/24

Chart: Shornmead to Lower Hope Point

PLA Chart No. 339
HO Ref No. 113-339-047

Previous Chart Correction: NewEdition

The accompanying block correction shows:
New PDC mooring no. (19), below Cliffe Pumping Station



For further information see the PLA hydrographic service website:

<http://www.pla.co.uk/Safety/PLA-Hydrographic-Service-Published-Surveys>