



PORT OF LONDON
AUTHORITY

Port of London Authority
Chart Correction Advice
Date: 2nd March, 2018

CCA No: 2018/04



Charts: Battersea Reach to Chelsea Reach
& Nine Elms Reach

PLA Chart No. 314
HO Ref No. 113-314-088
Previous Chart Correction: 2017/45

PLA Chart No. 315
HO Ref No. 113-315-050
Previous Chart Correction: 2018/02

The accompanying blocks correction shows:

Exclusion zone around a temporary cofferdam construction.
Expected to last approx. 8 months.
Ref Notice to Mariners M18 of 2018

Chart 314

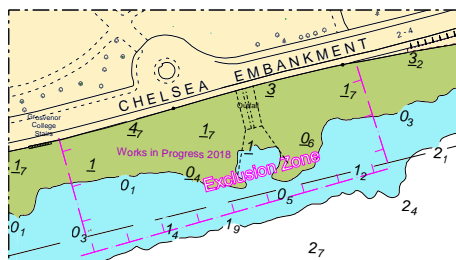
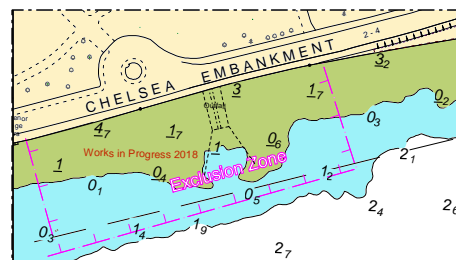


Chart 315



For further information see the PLA hydrographic service website:

<http://www.pla.co.uk/Safety/PLA-Hydrographic-Service-Published-Surveys>