



PORT OF LONDON  
AUTHORITY

Port of London Authority  
Chart Correction Advice  
Date:30th November, 2018



**CCA No: 2018/30**

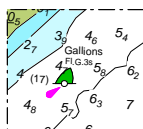
Chart: Woolwich Reach (Lower)  
& Gallions Reach

PLA Chart No. 324  
HO Ref No. 113-324-085  
Previous Chart Correction: 2017/36

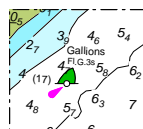
PLA Chart No. 325  
HO Ref No. 113-325-228  
Previous Chart Correction: 2017/48

The accompanying block correction shows  
New Gallions Starboard hand buoy (Fl.G.3s) off Gallions or Bull's Point

324



325



For further information see the PLA hydrographic service website:

<http://www.pla.co.uk/Safety/PLA-Hydrographic-Service-Published-Surveys>