



PORT OF LONDON
AUTHORITY

Port of London Authority
Chart Correction Advice
Date: 13th June, 2018

CCA No: 2018/16

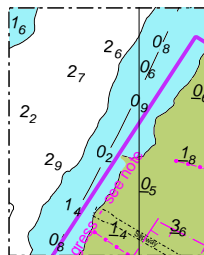


Chart: Nine Elms Reach

PLA Chart No. 315
HO Ref No. 113-315-050
Previous Chart Correction: 2018/11

The accompanying block correction shows:

New depths on channel edge off TTT Albert Embankment works



For further information see the PLA hydrographic service website:

<http://www.pla.co.uk/Safety/PLA-Hydrographic-Service-Published-Surveys>