



PORT OF LONDON
AUTHORITY

Port of London Authority
Chart Correction Advice
Date: 13th June, 2018



CCA No: 2018/14

Chart: Barn Elms Reach (Lower)
Wandsworth Reach to Battersea Reach

PLA Chart No. 312
HO Ref No. 113-312.-018
Previous Chart Correction: 2018/13

PLA Chart No. 313
HO Ref No. 113-313-040
Previous Chart Correction: 2018/07

The accompanying block correction shows:
The removal of the bridge navigation lights on Spans #2 & #4 of Fulham Rail Bridge

Chart 312

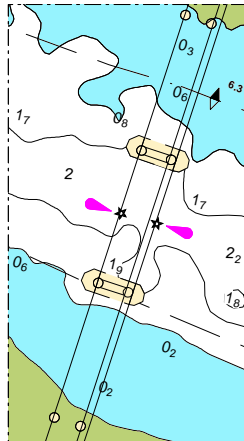
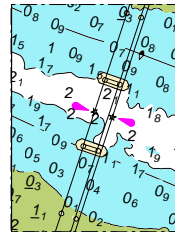


Chart 313



For further information see the PLA hydrographic service website:

<http://www.pla.co.uk/Safety/PLA-Hydrographic-Service-Published-Surveys>