



Port of London Authority  
Chart Correction Advice  
Date 16th May, 2018



**CCA No: 2018/12**

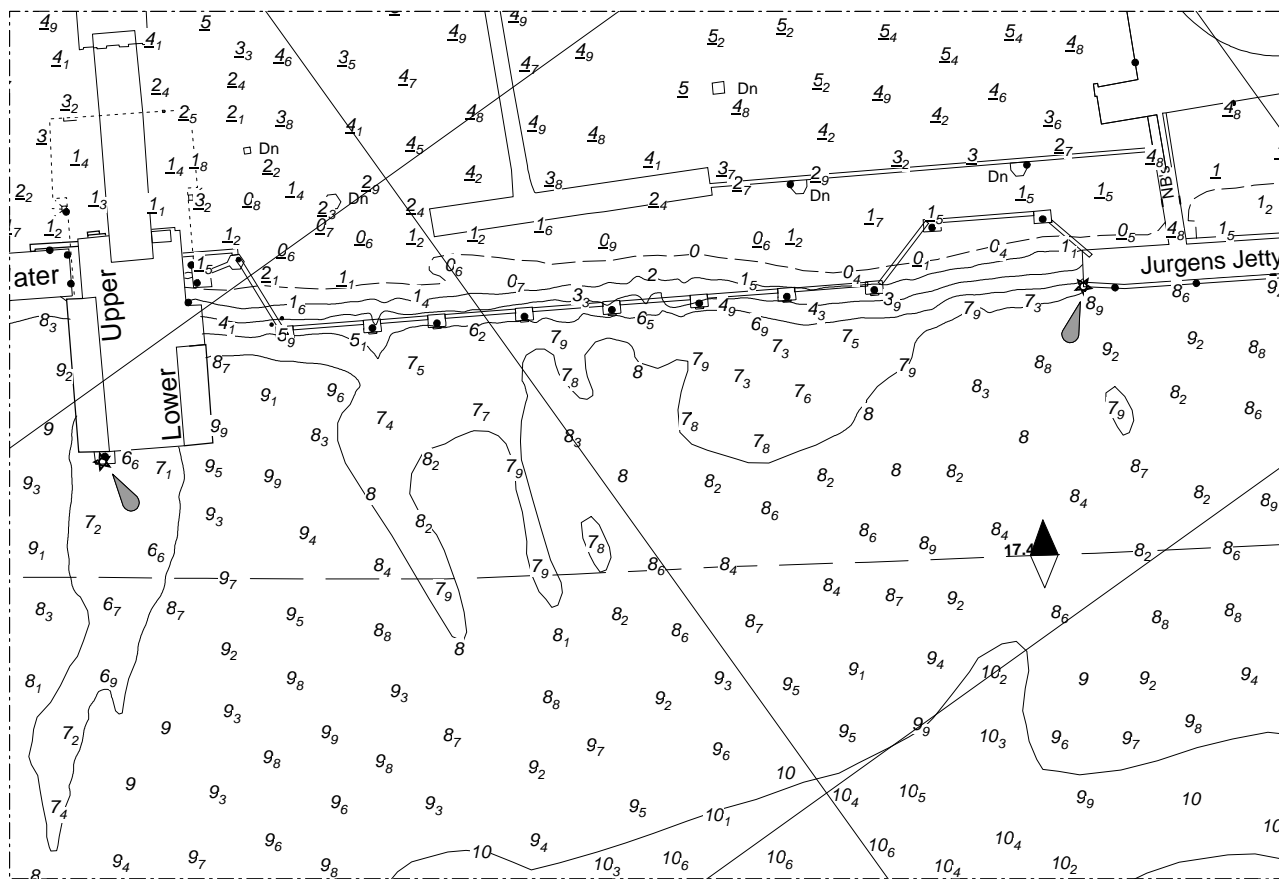
Charts: Long Reach (Upper) & (Lower)

PLA Chart No. 331  
HO Ref No. 113-331-344 (New Ed)  
Previous Chart Correction: 2017/33

The block below shows:  
New berthing structures at Purfleet Lower.

PLA Chart No. 332  
HO Ref No. 113-332-226 (New Ed)  
Previous Chart Correction: 2017/33

The New Interim Editions show the new jetty  
configuration plus revised soundings over an extended area from Purfleet to Stoneness



For further information see the PLA hydrographic service website:

<http://www.pla.co.uk/Safety/PLA-Hydrographic-Service-Published-Surveys>