



PORT OF LONDON  
AUTHORITY

Port of London Authority  
Chart Correction Advice  
Date: 19th April, 2018

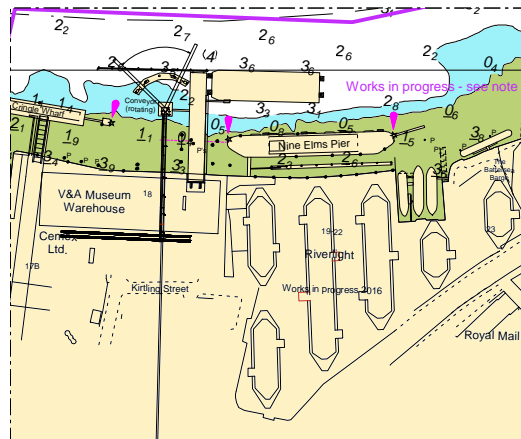
**CCA No: 2018/11**



Chart: Nine Elms Reach

PLA Chart No. 315  
HO Ref No. 113-315-050  
Previous Chart Correction: 2018/7

The accompanying block correction shows:  
New Jetty & conveyor at Kirtling Street, Nine Elms works



For further information see the PLA hydrographic service website:

<http://www.pla.co.uk/Safety/PLA-Hydrographic-Service-Published-Surveys>