



PORT OF LONDON
AUTHORITY

Port of London Authority
Chart Correction Advice
Date: 27th March 2017



CCA No: 2017/9

Chart: Woolwich Reach

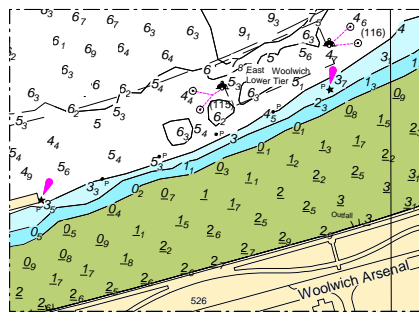
PLA Chart No. 324/325

HO Ref No. 113-324-085

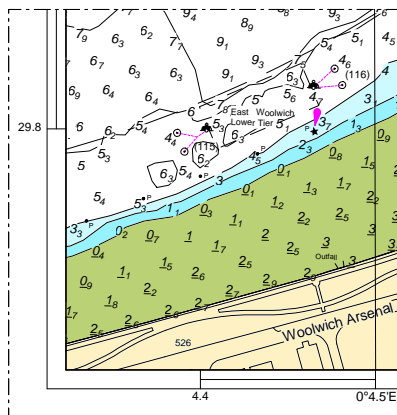
HO Ref No. 113-325-228

Previous Chart Correction: 324 MS 2016/28, 325 MS 2015/14

The accompanying block correction shows five new piles have been installed between the East Woolwich Lower tier and Woolwich Arsenal Pier. A light has been installed on the lower end pile.



324 MS



325 MS

For further information see the PLA hydrographic service website:

<http://www.pla.co.uk/Safety/PLA-Hydrographic-Service-Published-Surveys>