



PORT OF LONDON
AUTHORITY

Port of London Authority
Chart Correction Advice
Date: 15th November, 2017



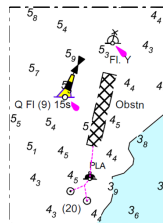
CCA No: 2017/42

Chart: Gallions. Reach

PLA Chart No. 325
HO Ref No. 113-325-228
Previous Chart Correction: 2017/36

The accompanying block correction shows:

New temporary buoys marking a sunken barge on PLA mooring (20)
Westerly Cardinal mark located 51.505487N 000.085345E
and Special mark located 51.505805N 000.085793E



For further information see the PLA hydrographic service website:

<http://www.pla.co.uk/Safety/PLA-Hydrographic-Service-Published-Surveys>