



PORT OF LONDON
AUTHORITY

Port of London Authority
Chart Correction Advice
Date: 6th November, 2017

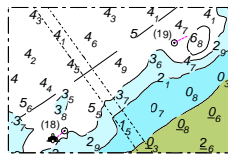


CCA No: 2017/40

Chart: Lower Pool to Limehouse Reach

PLA Chart No. 319.
HO Ref No. 113-319-130
Previous Chart Correction: 2017/11.

The accompanying block correction shows:
The Upper Hop Pole Mooring has an unlit buoy and the
the Lower Hop Pole Mooring buoy has been removed



For further information see the PLA hydrographic service website:

<http://www.pla.co.uk/Safety/PLA-Hydrographic-Service-Published-Surveys>