



PORT OF LONDON
AUTHORITY

Port of London Authority
Chart Correction Advice
Date: 22nd September, 2017



CCA No: 2017/34

Chart: Nine Elms Reach

PLA Chart No. 315
HO Ref No. 113-315-050
Previous Chart Correction: 2017/21

PLA Chart No. 314
HO Ref No. 113-314-088
Previous Chart Correction: 2017/29

The accompanying block corrections shows:

Revised topography/mooring off Chelsea Bridge Wharf and
New mooring, PLA Kirtling Barge Roads (TTT 28)

Chart 315

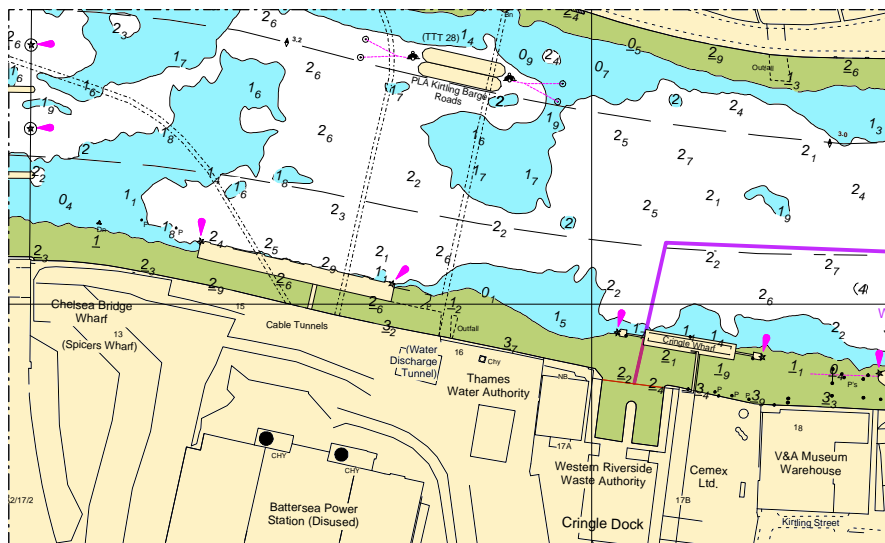
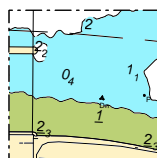


Chart 314



For further information see the PLA hydrographic service website:

<http://www.pla.co.uk/Safety/PLA-Hydrographic-Service-Published-Surveys>