



PORT OF LONDON
AUTHORITY

Port of London Authority Chart Correction Advice Date: 30th January 2016

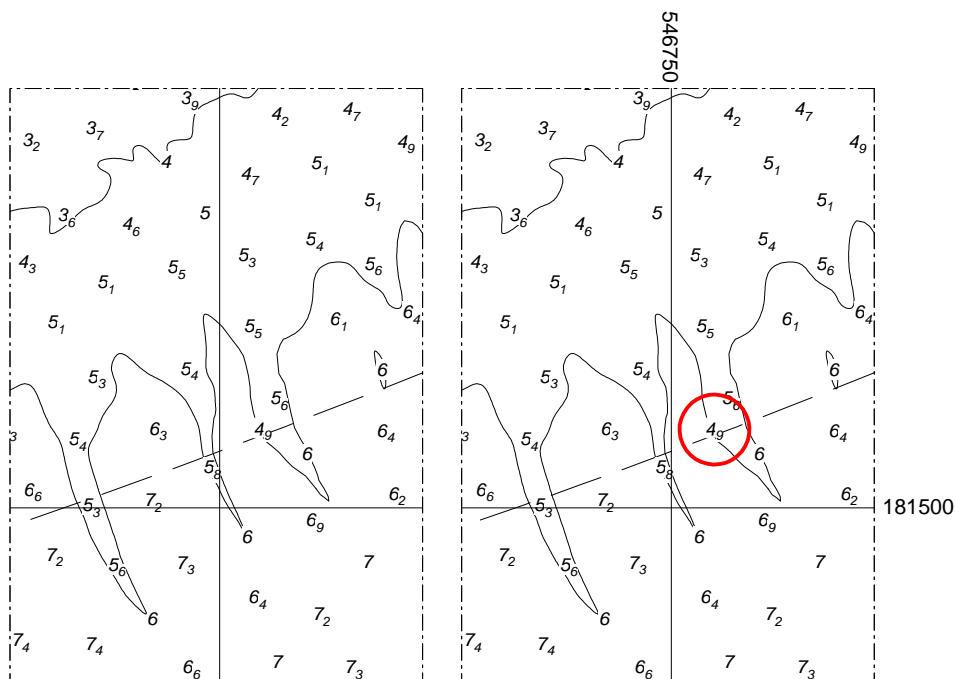


CCA No: 2017/3

Chart: Barking Reach

PLA Chart No. 326
HO Ref No. 113-326-209
Previous Chart Correction: 2015/14

The accompanying block correction shows a reduced depth of 4.9 metres on the northern edge of the navigable channel at the Barking Shoal off Barking Wharf.



For further information see the PLA hydrographic service website:

<http://www.pla.co.uk/Safety/PLA-Hydrographic-Service-Published-Surveys>