



PORT OF LONDON  
AUTHORITY

Port of London Authority  
Chart Correction Advice  
Date: .14th August 2017



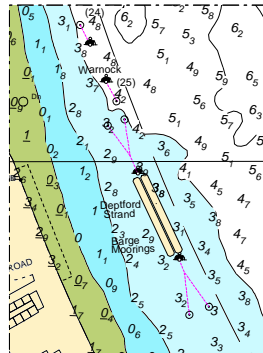
**CCA No: 2017/27**

Chart:Limehouse Reach

PLA Chart No. 320  
HO Ref No. 113-320-059  
Previous Chart Correction: 2017/20

The accompanying block correction shows

Temporary barge mooring laid 28/08/2017. 'Deptford Strand Barge Mooring'  
Anticipated to be in place for the duration of Tideway Tunnel workings



For further information see the PLA hydrographic service website:

<http://www.pla.co.uk/Safety/PLA-Hydrographic-Service-Published-Surveys>