



PORT OF LONDON
AUTHORITY

Port of London Authority
Chart Correction Advice
Date:26th July, 2017



CCA No: 2017/22

Chart: Lambeth Reach, Kings Reach

PLA Chart No. 316 (317).

HO Ref No. 113-316-178, 113-317-130.

Previous Chart Correction: 2017/21, 2017/19

The accompanying block correction shows

PLA Temple Driftwood anchor moorings (37) & (38) permanently removed from the River

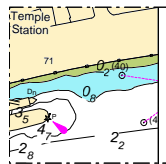


Chart 316

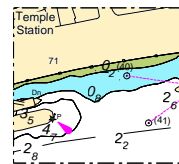


Chart 317

For further information see the PLA hydrographic service website:

<http://www.pla.co.uk/Safety/PLA-Hydrographic-Service-Published-Surveys>