



PORT OF LONDON
AUTHORITY

Port of London Authority
Chart Correction Advice
Date: 20th July 2017

CCA No: 2017/19

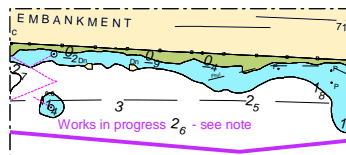


Chart: Kings Reach

PLA Chart No. 317
HO Ref No. 113-317.-130
Previous Chart Correction: 2017/4

The accompanying block correction shows

on 22/02/17, the lower HMS President screw moorings
were pulled and permanently removed from the river



For further information see the PLA hydrographic service website:

<http://www.pla.co.uk/Safety/PLA-Hydrographic-Service-Published-Surveys>