



PORT OF LONDON
AUTHORITY

Port of London Authority
Chart Correction Advice
Date: 20th July 2017

CCA No: 2017/18

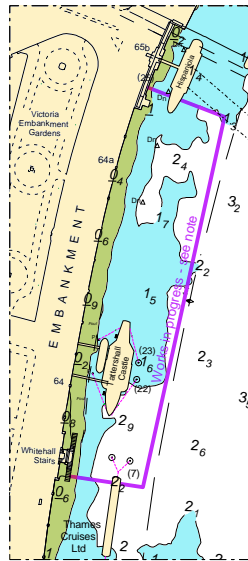


Chart: Lambeth. Reach

PLA Chart No. 316
HO Ref No. 113-316-178
Previous Chart Correction: 2017/6

The accompanying block correction shows

The "Tattershall Castle" has moved upstream with new piles and ground moorings (23 & 24)
The old ground moorings have been removed (22, 23, 24 & 25),
as have the "Thames Luxury Charters" barge and ground moorings (20 & 21)



For further information see the PLA hydrographic service website:

<http://www.pla.co.uk/Safety/PLA-Hydrographic-Service-Published-Surveys>