



PORT OF LONDON
AUTHORITY

Port of London Authority
Chart Correction Advice
Date:29th May, 2017

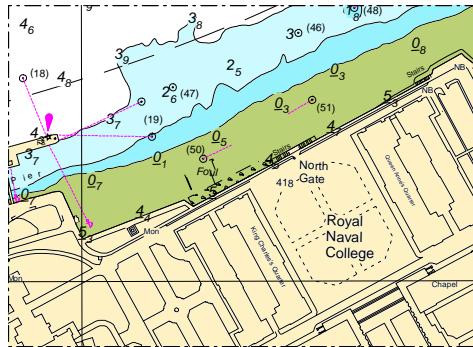
CCA No: 2017/14



Chart: Greenwich Reach

PLA Chart No. 321
HO Ref No. 113-321-190
Previous Chart Correction: 2016/18

The accompanying block correction shows
New Scour Protection, Exposed Jetty footings (Foul) and Pipe



For further information see the PLA hydrographic service website:

<http://www.pla.co.uk/Safety/PLA-Hydrographic-Service-Published-Surveys>