



PORT OF LONDON
AUTHORITY

Port of London Authority
Chart Correction Advice
Date: 16th January 2017

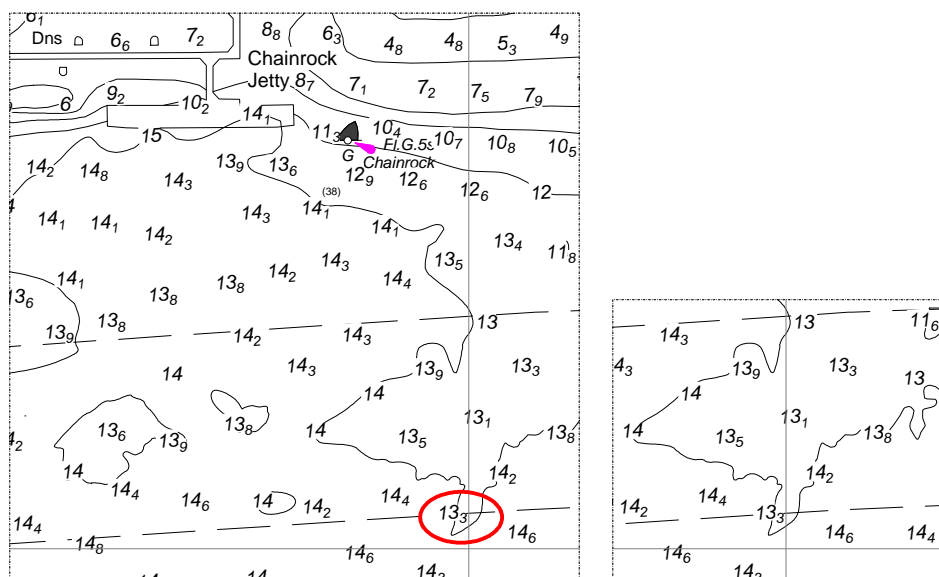


CCA No: 2017/1

Chart: Sea Reach

PLA Chart No. 341
HO Ref No. 113-341-572
Previous Chart Correction: 2016/27

The accompanying block correction shows the shoal wave in the channel off Holehaven has reduced from 13.6 to 13.3 metres.



For further information see the PLA hydrographic service website:

<http://www.pla.co.uk/Safety/PLA-Hydrographic-Service-Published-Surveys>