



PORT OF LONDON  
AUTHORITY

Port of London Authority  
Chart Correction Advice  
Date 19th May, 2017

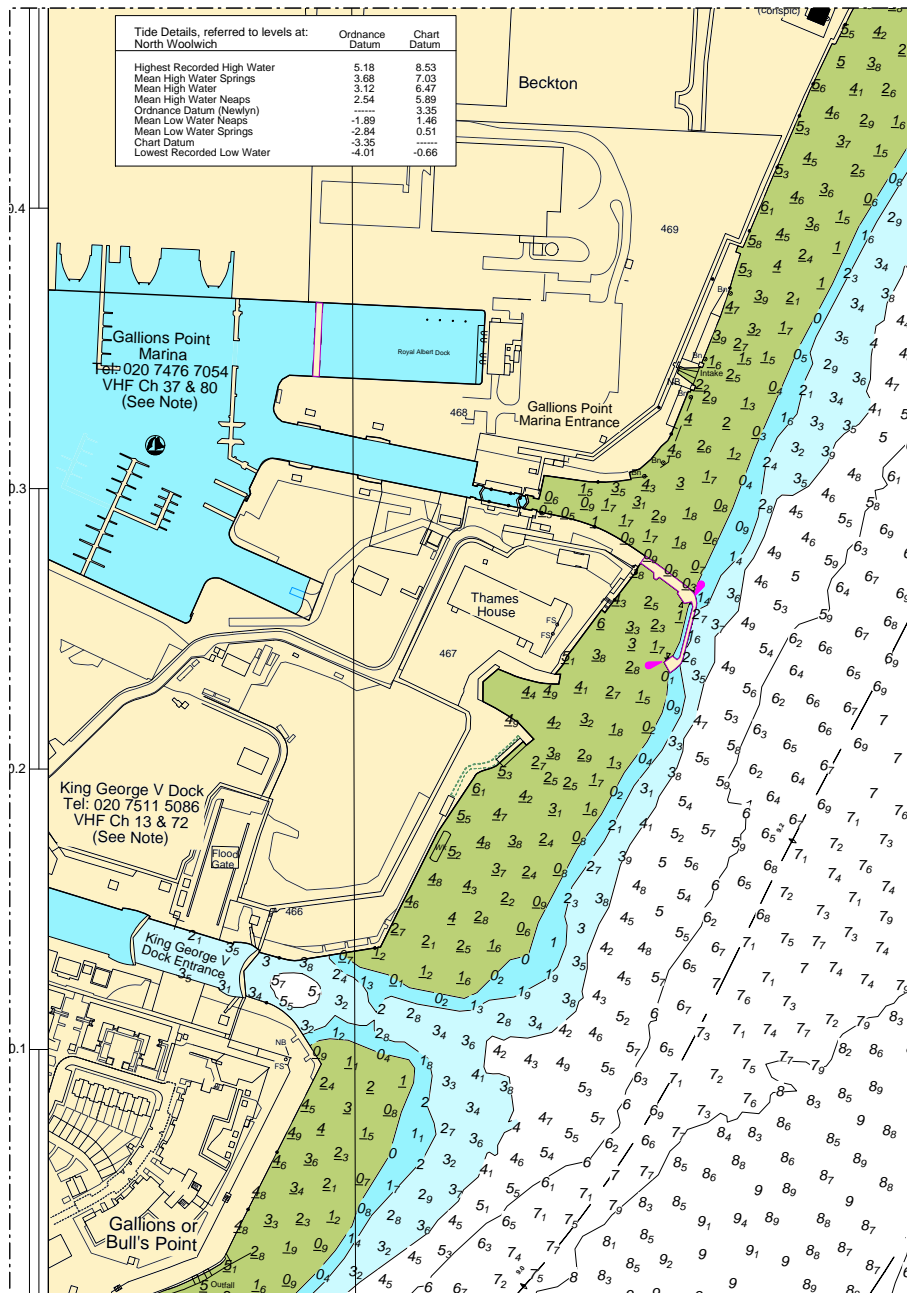


**CCA No: 2017/12**

Chart: Gallions Reach

PLA Chart No. 325  
HO Ref No. 113-325-228  
Previous Chart Correction: 2017/9

The accompanying block correction shows:  
Revised Topography around Gallions Marina & KGV Entrance



For further information see the PLA hydrographic service website:

<http://www.pla.co.uk/Safety/PLA-Hydrographic-Service-Published-Surveys>