



PORT OF LONDON
AUTHORITY

Port of London Authority
Chart Correction Advice
Date: 9th November 2016



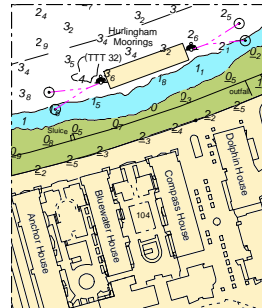
CCA No: 2016/32

Chart: Wandsworth Reach

PLA Chart No. 313
HO Ref No. 113-313-040
Previous Chart Correction: 2015/30

The accompanying block correction shows a new temporary barge has been installed on behalf of Thames Tideway Tunnel just upriver from Wandsworth Bridge towards the south bank named PLA Carnwath Road and numbered (TTT 32).

NB. Expected to be in place for approximately four years



For further information see the PLA hydrographic service website:

<http://www.pla.co.uk/Safety/PLA-Hydrographic-Service-Published-Surveys>