



PORT OF LONDON
AUTHORITY

Port of London Authority
Chart Correction Advice
Date: 2nd November 2016



CCA No: 2016/30

Chart: Erith Reach

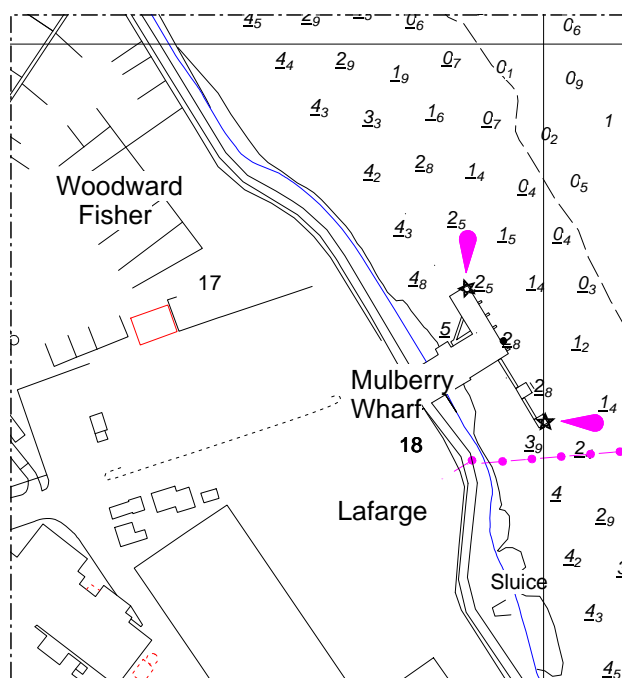
PLA Chart No. 328/329

HO Ref No. 113-328-078

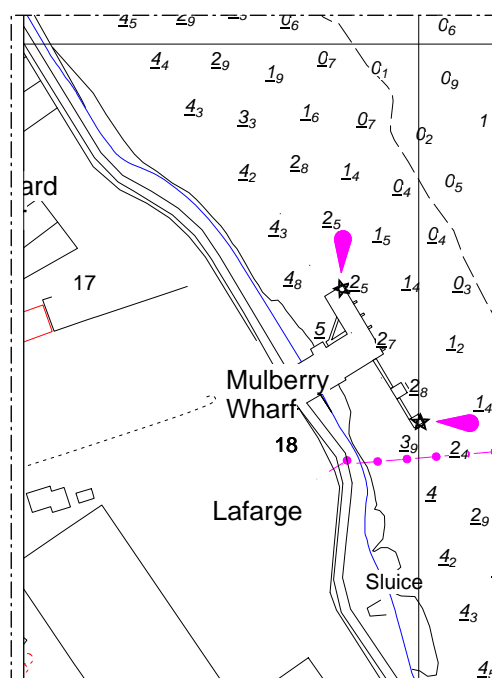
HO Ref No. 113-329-118

Previous Chart Correction: MS 328 2013/45, MS 329 2016/7

The accompanying block correction shows topography changes in the vicinity of Mulberry Wharf including jetty and light re-alignment, removal of building and amended vegetation boundary



MS328



MS329

For further information see the PLA hydrographic service website:

<http://www.pla.co.uk/Safety/PLA-Hydrographic-Service-Published-Surveys>